

**DIMENSIONAL VARIABLES**

DRAWING NOT TO SCALE; DIMENSIONS IN INCHES

| DOOR NO. | A | B | C | F | M | K | H |
|----------|---|---|---|---|---|---|---|
|          |   |   |   |   |   |   |   |

MILLIMETERS  
 ACTUAL DOOR SIZE IS PRODUCED IN MILLIMETERS  
 REQUESTED DOOR SIZE IS CONVERTED TO MILLIMETERS  
 AND ROUNDED UP TO THE NEAREST 10MM

**ELECTRICAL OPTIONS**

- 460v - 3ph
- 230v/208v - 3ph
- 230v/208v - 1ph
- 575v - 3ph (\$)  
 (INCLUDES NEMA 4 METAL ENCLOSURE WITH 575/460 TRANSFORMER)

**STANDARD FEATURES**

- SIDE COLUMN AND HEAD CONSOLE POWDER COATED RYTEC SILVER.
- INTELLIGENT LIGHT CURTAIN SYSTEM IN DOOR LINE TO 6'-0" ABOVE FINISHED FLOOR.
- VARIABLE DOOR OPENING SPEED; UP TO 60"/SEC.
- PROGRAMMABLE UPPER AND LOWER LIMITS.
- NEMA 4X SYSTEM 4 CONTROL BOX (8.5"x16.5").
- BRAKE RELEASE LEVER ON SIDE COLUMN.
- ELECTRICAL FAIL SAFE REVERSING EDGE.
- ONE (1) SET PATHWATCH LEDS.

**UPGRADE OPTIONS**

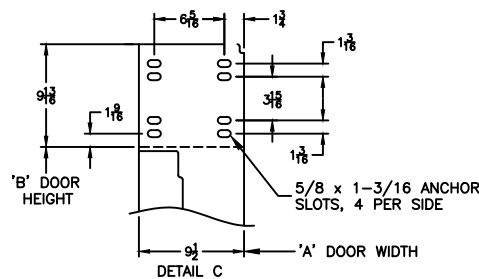
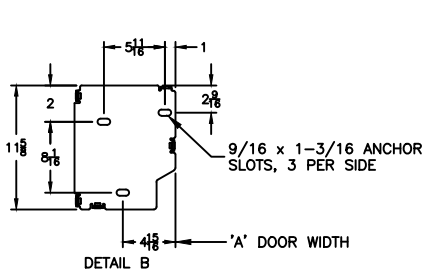
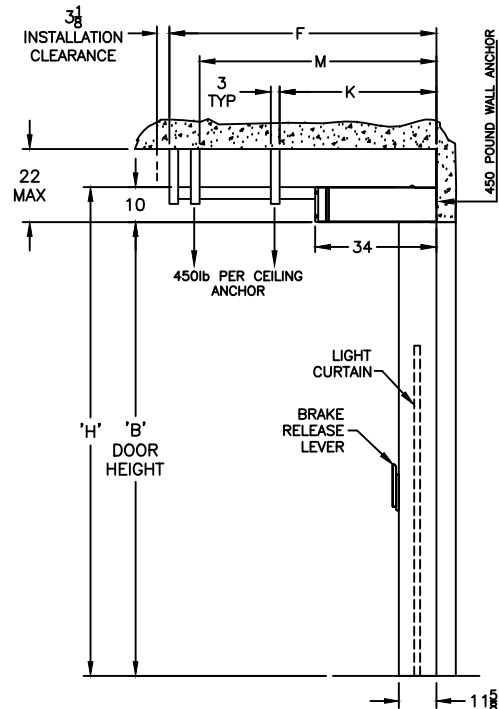
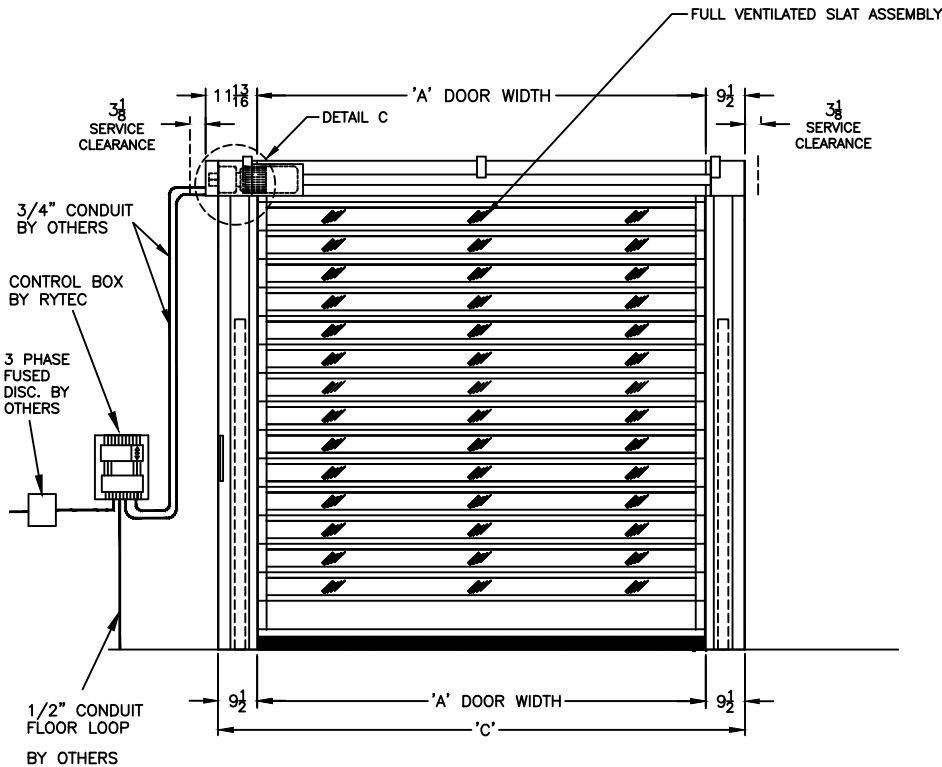
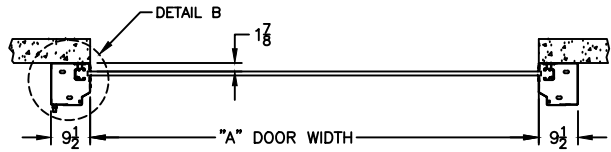
- BRAKE RELEASE LEVER**
- SIDE COLUMN
  - REMOTE MOUNT (\$)
  - BOTH (\$)
  - RIGHT HAND DRIVE
  - ROTARY DISCONNECT (\$)
  - SELECTOR SWITCH ON CONTROL BOX (\$)
- FUNCTION: \_\_\_\_\_
- PHOTOEYES IN LIEU OF LIGHT CURTAIN (\$)

**ACTIVATION OPTIONS (\$)**

- PUSHBUTTON
- PULL CORDS
- MOTION DETECTOR
- PRESENCE DET.
- MOTION/PRESENCE
- DUAL LOOP CONTROLLER
- RADIO CONTROL RCVR (INCLUDE MIN 2 XMIT)
- \_\_\_ 1 BTN TRANSMITTER
- \_\_\_ 2 BTN TRANSMITTER
- \_\_\_ 4 BTN TRANSMITTER

**OPTION NOTES**

(\$ ) = PRICING CHANGE IF NOT INCLUDED IN QUOTE  
 - FULL VENTILATED PANEL ASSEMBLY  
 \*\*\*PLEASE SPECIFY VOLTAGE\*\*\*



**FORMULAS**

$F = (B + 30.50)$ ; FOR  $B < 91$   
 $F = (B + 11.00)$ ; FOR  $B \geq 91$   
 $M = (B + 20.00)$ ; FOR  $B < 91$   
 $M = B$ ; FOR  $B \geq 91$   
 $K = \text{NOT REQ'D}$ ; FOR  $B < 99$   
 $K = 72.00$ ; FOR  $B \geq 99$

**FINAL APPROVAL SIGNATURE**

FABRICATION CAN PROCEED ACCORDING TO THE SPECIFICATION SHOWN EXCEPT AS NOTED

APPROVED BY: \_\_\_\_\_  
 PRINT NAME: \_\_\_\_\_  
 SIGNATURE: \_\_\_\_\_  
 DATE: \_\_\_\_\_

| REV | DESCRIPTION | DATE | BY |
|-----|-------------|------|----|
|     |             |      |    |

**RYTEC CORPORATION**  
 ONE CEDAR PARKWAY, JACKSON, WI 53037-0403

**APPROVAL DRAWING**  
 SPIRAL LH-FULL VENTILATED, STN-L  
 FOR DOOR WIDTH UP TO 13'-1", HEIGHT UP TO 13'-1"

CUSTOMER: \_\_\_\_\_  
 LOCATION: \_\_\_\_\_  
 DATE: \_\_\_\_\_  
 DRAWING NO.: 715-02T      REV.: \_\_\_\_\_