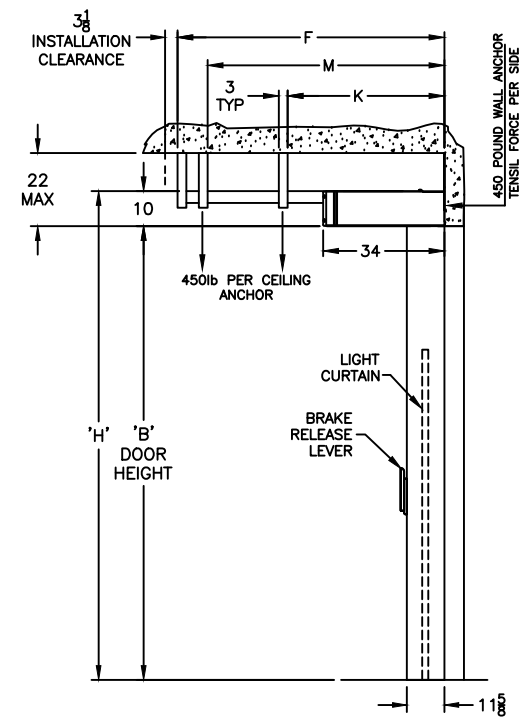
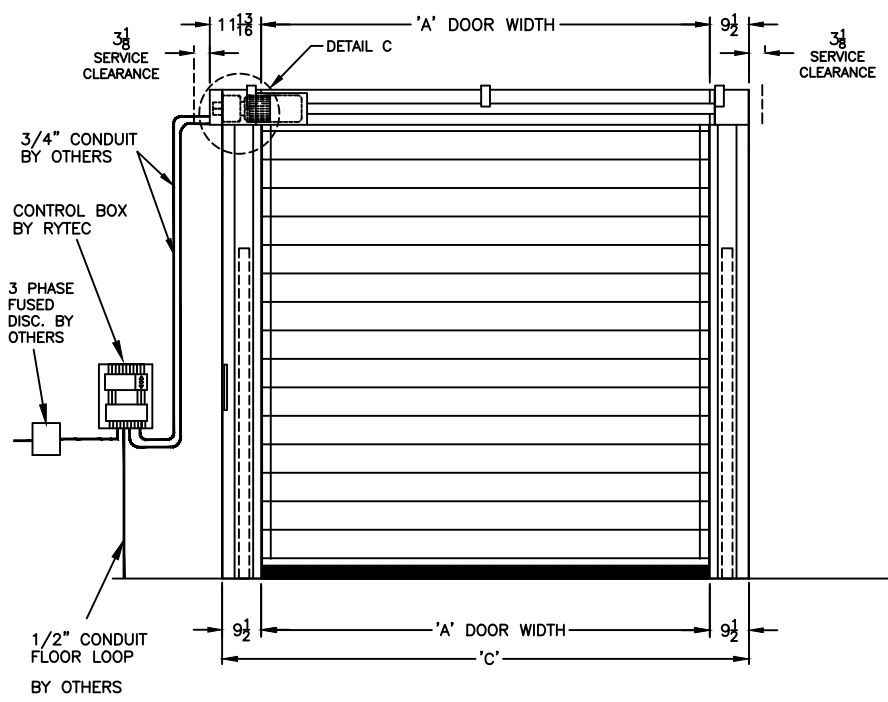
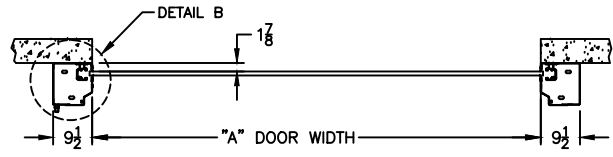


DIMENSIONAL VARIABLES

DRAWING NOT TO SCALE; DIMENSIONS IN INCHES

DOOR NO.	A	B	C	F	M	K	H

MILLIMETERS
 ACTUAL DOOR SIZE IS PRODUCED IN MILLIMETERS
 REQUESTED DOOR SIZE IS CONVERTED TO MILLIMETERS
 AND ROUNDED UP TO THE NEAREST 10MM



ELECTRICAL OPTIONS

- 460v - 3ph
- 230v/208v - 3ph
- 230v/208v - 1ph
- 575v - 3ph (\$) (INCLUDES NEMA 4 METAL ENCLOSURE WITH 575/460 TRANSFORMER)

STANDARD FEATURES

1. SIDE COLUMN AND HEAD CONSOLE POWDER COATED RYTEC SILVER.
2. INTELLIGENT LIGHT CURTAIN SYSTEM IN DOOR LINE TO 6'-0" ABOVE FINISHED FLOOR.
3. VARIABLE DOOR OPENING SPEED; UP TO 60"/SEC.
4. PROGRAMMABLE UPPER AND LOWER LIMITS.
5. NEMA 4X SYSTEM 4 CONTROL BOX (8.5"x16.5").
6. BRAKE RELEASE LEVER ON SIDE COLUMN.
7. ELECTRICAL FAIL SAFE REVERSING EDGE.
8. ONE (1) SET PATHWATCH LEDS.

UPGRADE OPTIONS

- BRAKE RELEASE LEVER
- SIDE COLUMN REMOTE MOUNT (\$) BOTH (\$)
- RIGHT HAND DRIVE
- ROTARY DISCONNECT (\$)
- SELECTOR SWITCH ON CONTROL BOX (\$)
- FUNCTION: _____
- PHOTOEYES IN LIEU OF LIGHT CURTAIN (\$)

PANEL OPTIONS

- INSULATED SOLID SLATS (\$)
 - WINDOWS (\$)
 - 1 2 3 4 OTHER _____
 - VENTS (\$)
 - 1 2 3 4 OTHER _____
 - VISION HEIGHT (DIM 'J')
 - 33" 39" 51"
- UP TO FOUR (4) VISION/VENT SLATS PER GROUP WITH AT LEAST ONE (1) SOLID SLAT SEPARATING GROUPS.
- OR UP TO SEVEN (7) VISION/VENT SLATS PER GROUP W/ AT LEAST TWO (2) SOLID SLATS SEPARATING GROUPS.

ACTIVATION OPTIONS (\$)

- PUSHBUTTON
- PULL CORDS
- MOTION DETECTOR
- PRESENCE DET.
- MOTION/PRESENCE
- DUAL LOOP CONTROLLER
- RADIO CONTROL RCVR (INCLUDE MIN 2 XMIT)
- ___ 1 BTN TRANSMITTER
- ___ 2 BTN TRANSMITTER
- ___ 4 BTN TRANSMITTER

OPTION NOTES

(\$) = PRICING CHANGE IF NOT INCLUDED IN QUOTE

PLEASE SPECIFY VOLTAGE

RYTEC CORPORATION

ONE CEDAR PARKWAY, JACKSON, WI 53037-0403

APPROVAL DRAWING

SPIRAL LH MODEL SSN-L

FOR DOOR WIDTH UP TO 13'-1", HEIGHT UP TO 13'-1"

CUSTOMER: _____

LOCATION: _____

DATE: _____

DRAWING NO.: 725-01T

REV.: _____

FORMULAS

$F = (B + 30.50); \text{ FOR } B < 91$
 $F = (B + 11.00); \text{ FOR } B \geq 91$

$M = (B + 20.00); \text{ FOR } B < 91$
 $M = B; \text{ FOR } B \geq 91$

$K = \text{NOT REQ'D}; \text{ FOR } B < 99$
 $K = 72.00; \text{ FOR } B \geq 99$

FINAL APPROVAL SIGNATURE

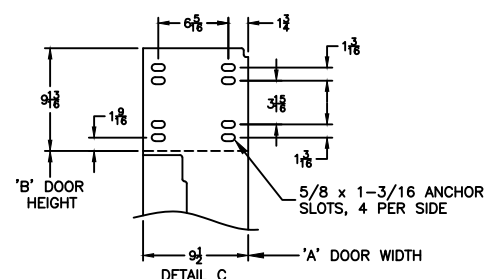
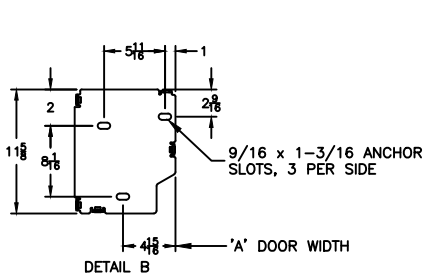
FABRICATION CAN PROCEED ACCORDING TO THE SPECIFICATION SHOWN EXCEPT AS NOTED

APPROVED BY: _____

PRINT NAME: _____

SIGNATURE: _____

DATE: _____



REV	DESCRIPTION	DATE	BY