

DRAWING NOT TO SCALE. DIMENSIONS IN INCHES

| DOOR NO. | A | B | HI-LIFT | C | D1 | D2 | D3 |
|-------------|---|---|---------|---|-------|----|----|
| MILLIMETERS | | | | | 21.38 | | |
| | | | N/A | | 542 | | |

ACTUAL DOOR SIZE IS PRODUCED IN MILLIMETER
REQUESTED DOOR SIZE IS CONVERTED TO MILLIMETERS
AND ROUNDED UP TO THE NEAREST 10MM

ELECTRICAL OPTIONS

- 460v - 3ph
- 230v/208v - 3ph
- 230v/208v - 1ph
- 575v - 3ph (INCLUDES NEMA 4 METAL ENCLOSURE WITH 575/480 TRANSFORMER)

STANDARD FEATURES

1. ONE THRU-BEAM PHOTOEYE SET MOUNTED IN SIDE COLUMN AT 4" FROM FLOOR.
2. DOOR OPENING SPEED OF 12"/SECOND
3. DOOR CLOSING SPEED OF 12"/SECOND
4. PROGRAMMABLE UPPER AND LOWER LIMITS
5. NEMA 4X SYSTEM 4 CONTROL BOX (8.5"X16.5")

STANDARD OPTIONS

- CHAIN HOIST
- RIGHT HAND DRIVE
- ROTARY DISCONNECT
- SELECTOR SWITCH ON CONTROL BOX

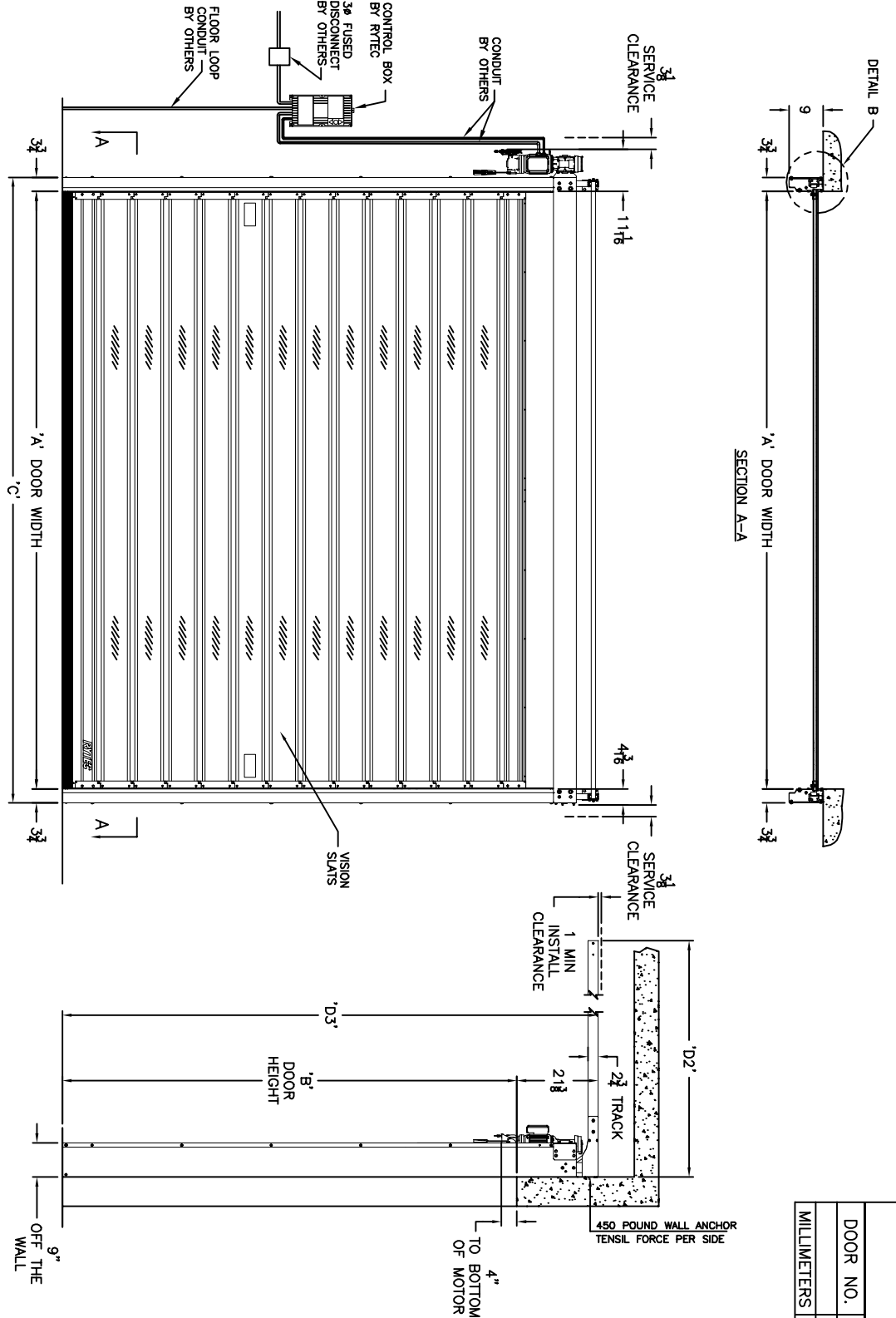
ACTIVATION

- PUSHBUTTON
- PULL CORDS
- MOTION DETECTOR
- PRESENCE DET.
- MOTION/PRESENCE
- DUAL LOOP CONTROLLER
- RADIO CONTROL RCVR (INCLUDE MIN 2 XMIT)
- 1 BTN TRANSMITTER
- 2 BTN TRANSMITTER
- 4 BTN TRANSMITTER

OPTION NOTES

ADDITIONAL NOTES:

PLEASE SPECIFY VOLTAGE



FORMULAS

- 'A' = PRODUCTION WIDTH (PW)
- 'B' = PRODUCTION HEIGHT (PH)
- 'C' = 1/2 'A' + 7.50in [190mm]
- 'D1' (NOT USED)
- 'D2' = 'B' + 0.91in [23mm]
- 'D3' = 'B' + 21.38in [542mm]

APPROVAL SIGNATURE

FABRICATION CAN PROCEED ACCORDING TO THE SPECIFICATION SHOWN EXCEPT AS NOTED

APPROVED BY: _____

PRINT NAME: _____

SIGNATURE: _____

DATE: _____

RYTEC CORPORATION

ONE CEDAR PARKWAY, JACKSON, WI 53037-0403

APPROVAL DRAWING

SPIRAL FV MODEL VPD - DIRECT DRIV
STANDARD LIFT

FOR DOOR WIDTH UP TO 140", HEIGHT UP TO 14'-0"

CUSTOMER: _____

LOCATION: _____

DATE: _____ REV: _____

| REV | DESCRIPTION | DATE | BY |
|-----|-------------|------|----|
| | | | |



| REV | DESCRIPTION | DATE | BY |
|-----|-------------|------|----|
| | | | |

DRAWING NO.: 401074-40T-S

DRAWING NOT TO SCALE. DIMENSIONS IN INCHES

| DOOR NO. | A | B | HI-LIFT | C | D1 | D2 | D3 |
|-------------|---|---|---------|---|-----|----|----|
| MILLIMETERS | | | | | N/A | | |

ACTUAL DOOR SIZE IS PRODUCED IN MILLIMETER
REQUESTED DOOR SIZE IS CONVERTED TO MILLIMETERS
AND ROUNDED UP TO THE NEAREST 10MM

ELECTRICAL OPTIONS

- 460v - 3ph
- 230v/208v - 3ph
- 230v/208v - 1ph
- 575v - 3ph (INCLUDES NEMA 4 METAL ENCLOSURE WITH 575/480 TRANSFORMER)

STANDARD FEATURES

1. ONE THRU-BEAM PHOTOEYE SET MOUNTED IN SIDE COLUMN AT 4" FROM FLOOR.
2. DOOR OPENING SPEED OF 12"/SECOND
3. DOOR CLOSING SPEED OF 12"/SECOND
4. PROGRAMMABLE UPPER AND LOWER LIMITS
5. NEMA 4X SYSTEM 4 CONTROL BOX (8.5"X16.5")

STANDARD OPTIONS

- CHAIN HOIST
- RIGHT HAND DRIVE
- ROTARY DISCONNECT
- SELECTOR SWITCH ON CONTROL BOX

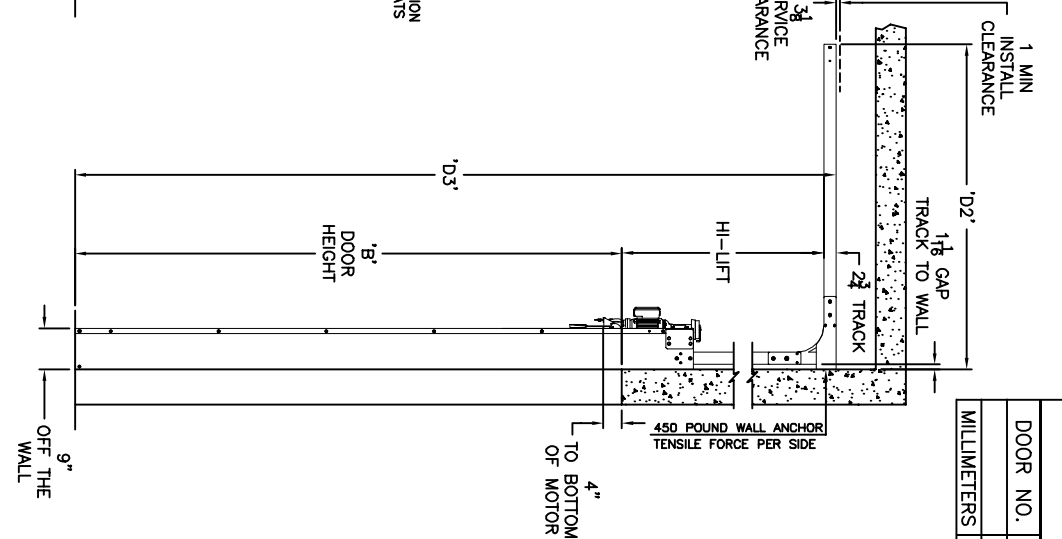
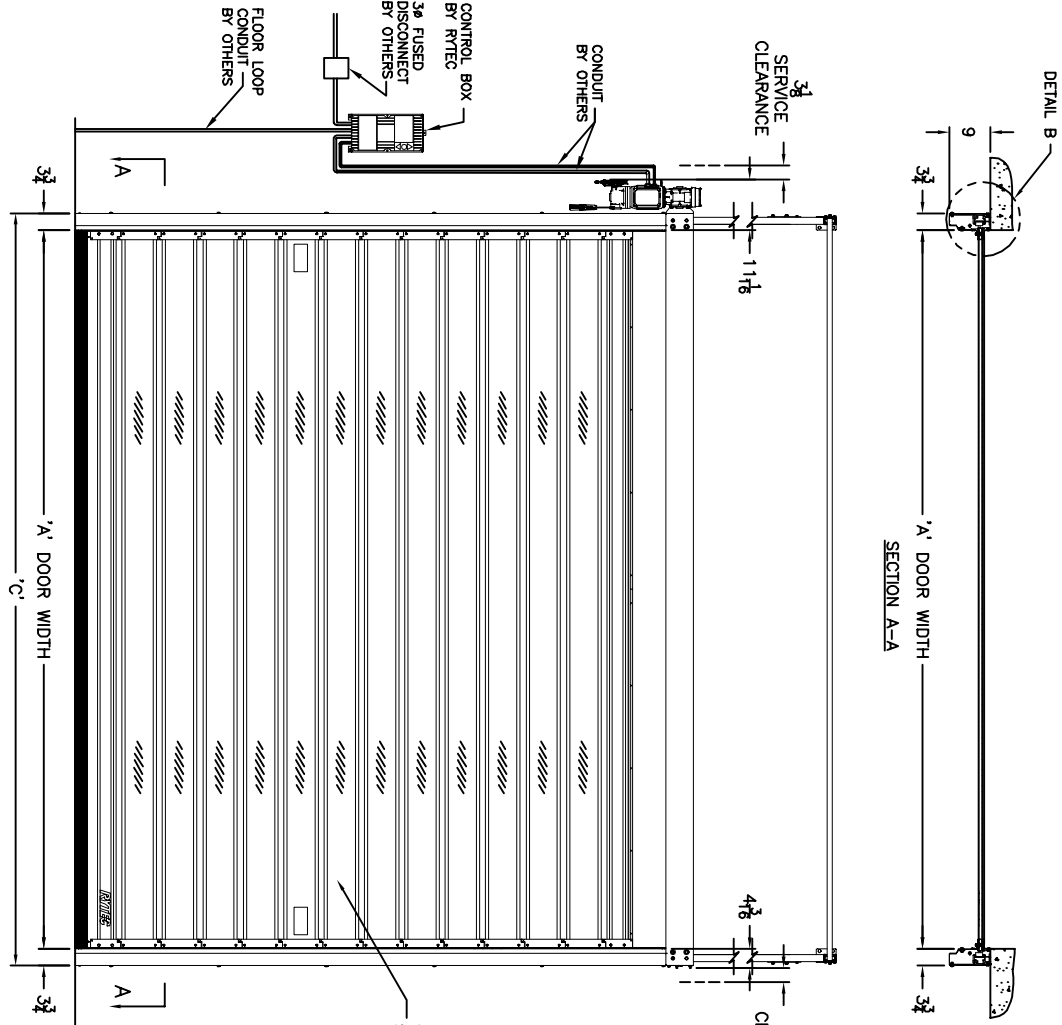
ACTIVATION

- PUSHBUTTON
- PULL CORDS
- MOTION DETECTOR
- PRESENCE DET.
- MOTION/PRESENCE
- DUAL LOOP CONTROLLER
- RADIO CONTROL RCVR (INCLUDE MIN 2 XMIT)
- 1 BTN TRANSMITTER
- 2 BTN TRANSMITTER
- 4 BTN TRANSMITTER

OPTION NOTES

ADDITIONAL NOTES:

PLEASE SPECIFY VOLTAGE



FORMULAS

- 'A' = PRODUCTION WIDTH (PW)
- 'B' = PRODUCTION HEIGHT (PH)
- 'C' = 'A' + 7.50in [190mm]
- 'D1' = (NOT USED)
- 'D2' = 'B' - HI-LIFT + 19.53in [496mm]
- 'D3' = 'B' + HI-LIFT + 2.75in [70mm]
- MAX HI-LIFT = 'B' + 1.50in [38mm]
- MIN HI-LIFT = 29.00in [737mm]

APPROVAL SIGNATURE

FABRICATION CAN PROCEED ACCORDING TO THE SPECIFICATION SHOWN EXCEPT AS NOTED

APPROVED BY: _____

PRINT NAME: _____

SIGNATURE: _____

DATE: _____

RYTEC CORPORATION
ONE CEDAR PARKWAY, JACKSON, WI 53037-0403

APPROVAL DRAWING
SPIRAL FV MODEL VPD - DIRECT DRIV
HIGH LIFT
FOR DOOR WIDTH UP TO 140", HEIGHT UP TO 14'-0"

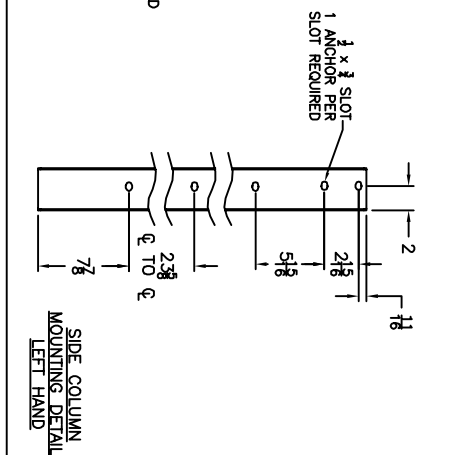
CUSTOMER: _____

LOCATION: _____

DATE: _____

DRAWING NO.: 401074-40T-H

| REV | DESCRIPTION | DATE | BY |
|-----|-------------|------|----|
| | | | |



DRAWING NOT TO SCALE. DIMENSIONS IN INCHES

| DOOR NO. | A | B | HI-LIFT | C | D1 | D2 | D3 |
|-------------|---|---|---------|---|----|----|----|
| MILLIMETERS | | | | | | | |

ACTUAL DOOR SIZE IS PRODUCED IN MILLIMETERS
REQUESTED DOOR SIZE IS CONVERTED TO MILLIMETERS
AND ROUNDED UP TO THE NEAREST 10MM

ELECTRICAL OPTIONS

- 460v - 3ph
- 230v/208v - 3ph
- 230v/208v - 1ph
- 575v - 3ph (INCLUDES NEMA 4 METAL ENCLOSURE WITH 575/480 TRANSFORMER)

STANDARD FEATURES

1. ONE THRU-BEAM PHOTOEYE SET MOUNTED IN SIDE COLUMN AT 4" FROM FLOOR.
2. DOOR OPENING SPEED OF 12"/SECOND
3. DOOR CLOSING SPEED OF 12"/SECOND
4. PROGRAMMABLE UPPER AND LOWER LIMITS
5. NEMA 4X SYSTEM 4 CONTROL BOX (8.5"X16.5")

STANDARD OPTIONS

- CHAIN HOIST
- RIGHT HAND DRIVE
- ROTARY DISCONNECT
- SELECTOR SWITCH ON CONTROL BOX

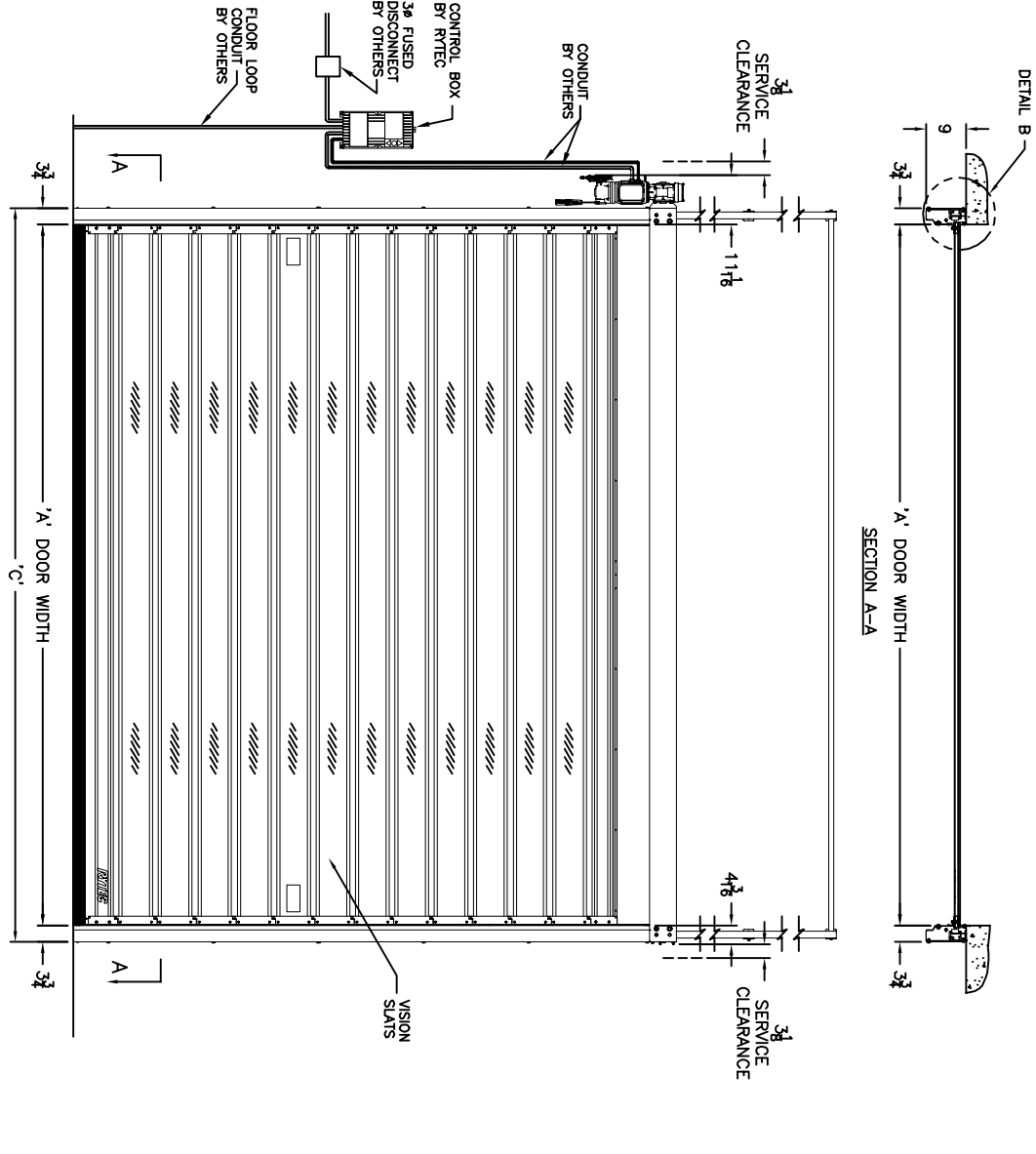
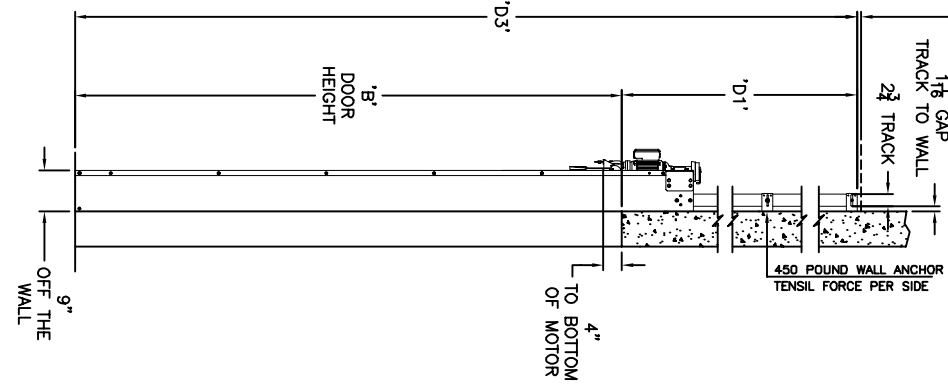
ACTIVATION

- PUSHBUTTON
- PULL CORDS
- MOTION DETECTOR (INCLUDE MIN 2 XMIT)
- PRESENCE DET.
- MOTION/PRESENCE
- DUAL LOOP CONTROLLER
- RADIO CONTROL RCVR (INCLUDE MIN 2 XMIT)
- 1 BTN TRANSMITTER
- 2 BTN TRANSMITTER
- 4 BTN TRANSMITTER

OPTION NOTES

ADDITIONAL NOTES:

PLEASE SPECIFY VOLTAGE



FORMULAS

'A' = PRODUCTION WIDTH (PW)
'B' = PRODUCTION HEIGHT (PH)
'C' = 'A' + 7.50in [190mm]
'D1' = 'B' + 15.50in [393mm]
'D2' (NOT USED)
'D3' = 'B' + 'D1'

APPROVAL SIGNATURE

FABRICATION CAN PROCEED ACCORDING TO THE SPECIFICATION SHOWN EXCEPT AS NOTED

APPROVED BY: _____

PRINT NAME: _____

SIGNATURE: _____

DATE: _____

RYTEC CORPORATION
ONE CEDAR PARKWAY, JACKSON, WI 53037-0403

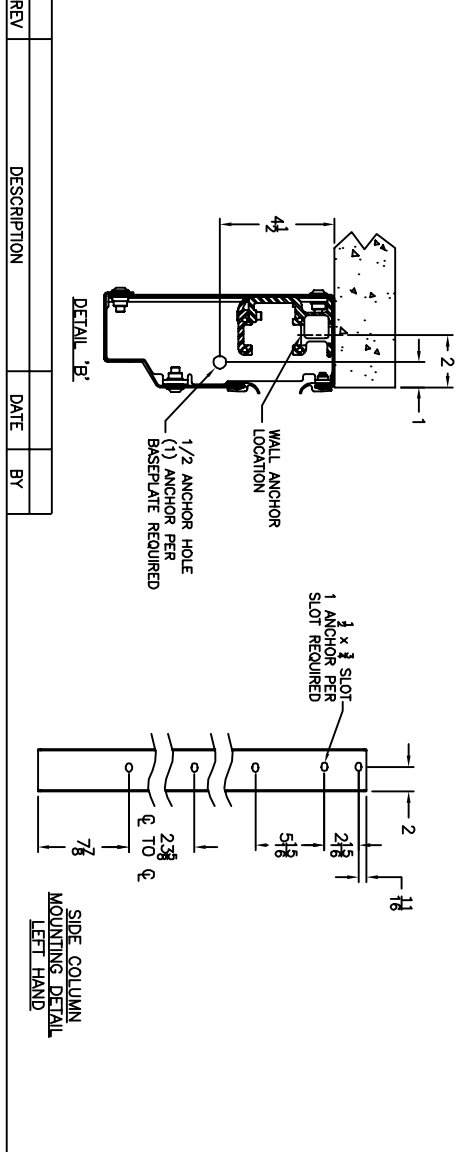
APPROVAL DRAWING
SPIRAL FV MODEL VPD - DIRECT DRIV
VERTICAL LIFT

CUSTOMER: _____
FOR DOOR WIDTH UP TO 140", HEIGHT UP TO 14'-0"

LOCATION: _____

DATE: _____

DRAWING NO.: 401074-40T-V



| REV | DESCRIPTION | DATE | BY |
|-----|-------------|------|----|
| | | | |

| REV | DESCRIPTION | DATE | BY |
|-----|-------------|------|----|
| | | | |