

SIDE COLUMN PROFILE

DETAIL A
MOUNTING HOLE LOCATIONS
TYP BOTH SIDE COLUMNS

HIGH VOLTAGE
CONDUIT
BY OTHERS

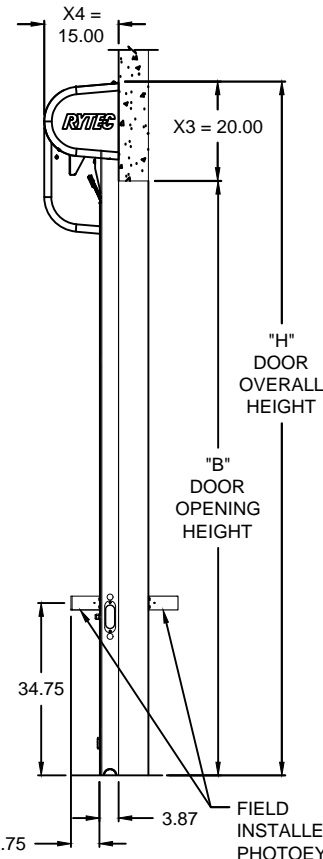
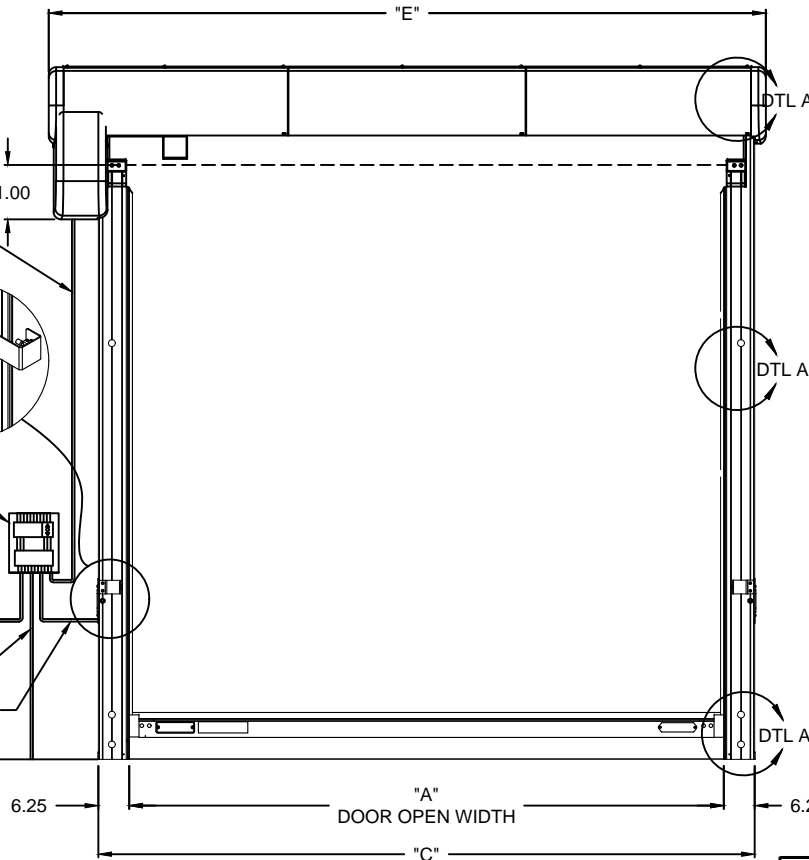
(2) 3/4-14 NPT
BOTH SIDE
COLUMNS

CONTROL BOX
BY RYTEC

3Ø DISCONNECT
BY OTHERS

FLOOR LOOP CONDUIT
BY OTHERS

LOW VOLTAGE CONDUIT
BY OTHERS



DRAWING NOT TO SCALE, ALL DIMENSIONS IN INCHES

DOOR NO.	A	B	C	E	H

PANEL OPTIONS

3PLY			
<input type="checkbox"/> BLUE			
<input type="checkbox"/> ORANGE			
<input type="checkbox"/> GRAY			
<input type="checkbox"/> BROWN			

ELECTRICAL OPTIONS

<input type="checkbox"/> 460v - 3ph	<input type="checkbox"/> 575v - 3ph (\$)
<input type="checkbox"/> 230v/208v - 3ph	(INCLUDES NEMA 4
<input type="checkbox"/> 230v - 1ph	METAL ENCLOSURE WITH
<input type="checkbox"/> 480v OPEN DELTA, UNGROUND (\$)	575/460 TRANSFORMER)

STANDARD FEATURES

1. WIRELESS BOTTOM BAR (NO COIL CORD)
2. SEMI-AUTOMATIC SELF REPAIRING BOTTOM BAR
3. (2) SAFETY PHOTOEYES (FIELD INSTALLED)
4. (2) SETS PATHWATCH SAFETY SYSTEM.
5. DUAL AIR REVERSING EDGE

UPGRADE OPTIONS

- ALUMINUM HOOD (\$)
 - PLASTIC HOOD WITH MOTOR COVER (\$)
 - RIGHT HAND DRIVE (LH STANDARD)
 - ROTARY DISCONNECT (NON-FUSED) (\$)
 - BTA4 (BLUETOOTH ACCESS TERMINAL) (\$)
- NIGHT SWITCH FUNCTION: _____
- SELECTOR SWITCH ON CONTROL BOX(\$)
 - FUNCTION: _____
 - TEMP < 50° REQR LOW TEMP PVC

ACTIVATION OPTIONS (\$)

- | | |
|--|---|
| <input type="checkbox"/> — PUSHBUTTON | <input type="checkbox"/> DUAL LOOP CONTROLLER |
| <input type="checkbox"/> — PULL CORDS | <input type="checkbox"/> RADIO CONTROL RCVR |
| <input type="checkbox"/> — MOTION DETECTOR | (INCLUDE MIN 2 XMIT) |
| <input type="checkbox"/> — PRESENCE DET. | — 1 BTN TRANSMITTER |
| <input type="checkbox"/> — MOTION/PRESENCE | — 2 BTN TRANSMITTER |
| | — 4 BTN TRANSMITTER |

OPTION NOTES

(\$) = PRICING CHANGE IF NOT INCLUDED IN THE QUOTE

PLEASE SPECIFY PANEL COLOR AND VOLTAGE

RYTEC CORPORATION
ONE CEDAR PARKWAY, JACKSON, WI 53037-0403

APPROVAL DRAWING
PREDADOOR NXT® - PREDACOOOL

CUSTOMER:	
LOCATION:	
DATE:	REV.:
DRAWING NO.:	401064-08T

FINAL APPROVAL SIGNATURE

FABRICATION CAN PROCEED ACCORDING TO THE
SPECIFICATION SHOWN EXCEPT AS NOTED

APPROVED BY: _____
PRINT NAME: _____
SIGNATURE: _____
DATE: _____

	X1	X2	X3	X4	C = A + 12.50
WITHOUT HOOD	15.00	7.00	17.13	15.50	E = A + X1 + X2
ALUMINUM HOOD	16.00	8.00	20.13	17.50	H = B + X3
PLASTIC HOOD	16.25	8.50	20.00	15.50	