

DIMENSIONAL VARIABLES

DRAWING NOT TO SCALE. DIMENSIONS IN INCHES

DOOR NO.	A	B	C	H

MILLIMETERS

ACTUAL DOOR SIZE IS PRODUCED IN MILLIMETERS
REQUESTED DOOR SIZE IS CONVERTED TO MILLIMETERS
AND ROUNDED UP TO THE NEAREST 10MM

ELECTRICAL OPTIONS

- 460v - 3ph
- 230v/208v - 3ph
- 230v/208v - 1ph
- 575v - 3ph
(INCLUDES NEMA 4 METAL ENCLOSURE WITH 575/460 TRANSFORMER)

STANDARD FEATURES

- SIDE COLUMN AND HEAD CONSOLE POWDER COATED RYTEC SILVER.
- INTELLIGENT LIGHT CURTAIN SYSTEM IN DOOR LINE TO 6'-0" ABOVE FINISHED FLOOR.
- VARIABLE DOOR OPENING SPEED; UP TO 118"/SEC.
- PROGRAMMABLE UPPER AND LOWER LIMITS.
- NEMA 4X SYSTEM 4 CONTROL BOX (8.5"x16.5").
- BRAKE RELEASE LEVER ON SIDE COLUMN.
- ELECTRICAL FAIL SAFE REVERSING EDGE.
- ONE (1) SET PATHWATCH SAFETY SYSTEM.

STANDARD OPTIONS

- BRAKE RELEASE LEVER
- SIDE COLUMN REMOTE MOUNT BOTH
 - SLANT HOOD (INCLUDES FRONT/BOTTOM COVERS)
 - FLAT HOOD (INCLUDES FRONT/BOTTOM COVERS)
 - FRONT AND BOTTOM HEAD COVERS ONLY
 - RIGHT HAND DRIVE
 - ROTARY DISCONNECT
 - SELECTOR SWITCH ON CONTROL BOX
- FUNCTION:
- PHOTOEYES IN LIEU OF LIGHT CURTAINS

ACTIVATION

- PUSHBUTTON
- PULL CORDS
- MOTION DETECTOR
- PRESENCE DET.
- MOTION/PRESENCE
- DUAL LOOP CONTROLLER
- RADIO CONTROL RCVR
(INCLUDE MIN 2 XMIT)
- 1 BTN TRANSMITTER
- 2 BTN TRANSMITTER
- 4 BTN TRANSMITTER

OPTION NOTES

ADDITIONAL NOTES:

PLEASE SPECIFY VOLTAGE

RYTEC CORPORATION

ONE CEDAR PARKWAY, JACKSON, WI 53037-0403

APPROVAL DRAWING

SPIRAL FV MODEL STT-L

FOR DOOR WIDTH UP TO 13'-1", HEIGHT UP TO 12'-9"

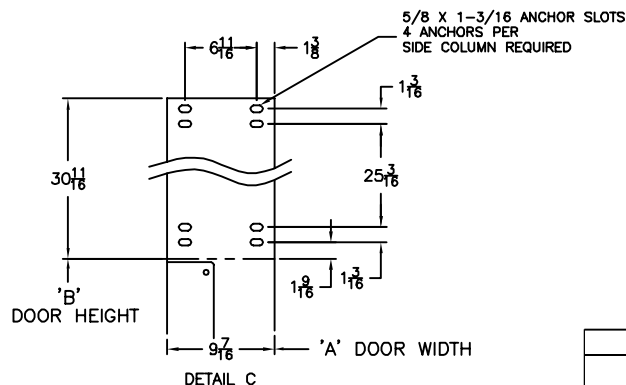
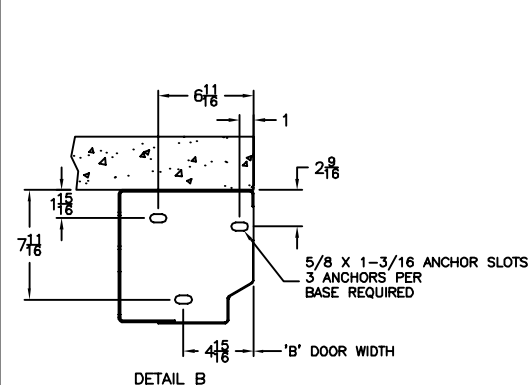
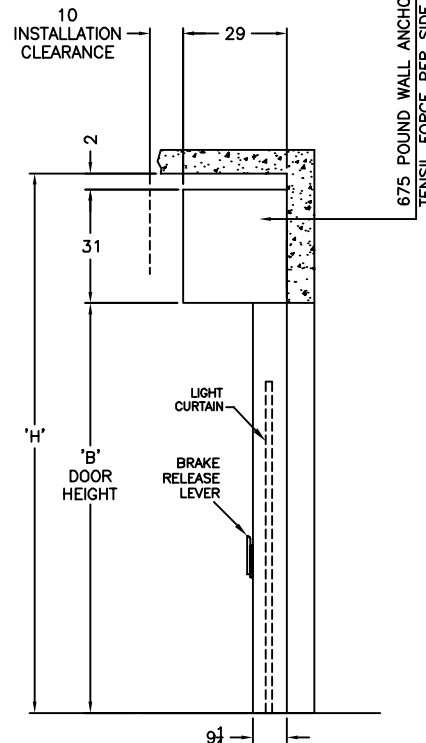
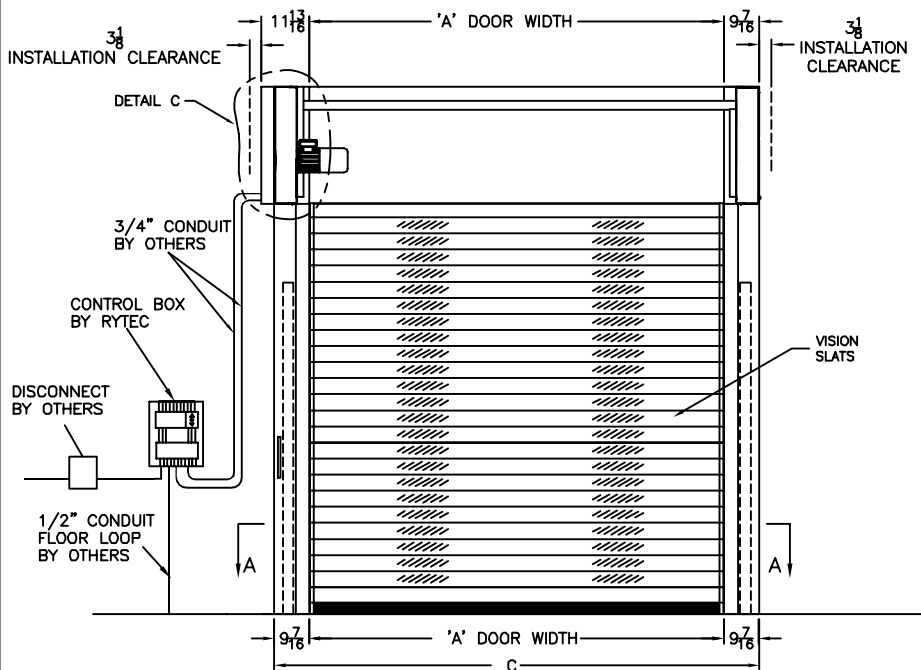
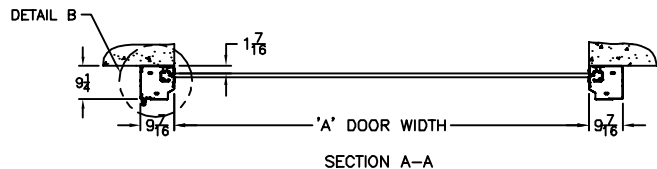
CUSTOMER:

LOCATION:

DATE:

DRAWING NO.: 724-01T

REV.:



APPROVAL SIGNATURE

FABRICATION CAN PROCEED ACCORDING TO THE SPECIFICATION SHOWN EXCEPT AS NOTED

APPROVED BY: _____

PRINT NAME: _____

SIGNATURE: _____

DATE: _____

REV	DESCRIPTION	DATE	BY