

SPIRAL®

HIGH PERFORMANCE RIGID ROLLING DOOR

High Security, High Speed, with Architectural Style - All in One Door

With an opening speed of up to 60 inches per second, the Spiral door offers the speed you need for high-traffic situations. Rigid, aluminum slat construction eliminates any need for a second overnight security door.

Crisp lines give the Spiral door a stylish look that's great for all kinds of commercial, institutional, as well as industrial applications. Because its anodized aluminum will not corrode, you can count on that look to last for many years under even the worst weather conditions.

High Security - Rigid, aluminum slat construction and optional, integral locking system provides unparalleled security.

Fast - Opens at up to 60 inches per second for improved traffic flow.

Ultra Quiet - The unique Spiral roll-up design features no metal-to-metal contact, therefore offering remarkably quiet operation.

High Performance - The variable speed AC Drive system, with soft acceleration and deceleration, smooths out routine stops and starts, virtually eliminating the clunking gear engagements associated with typical overhead door operation.

Energy Efficient and Tight Seal - Aluminum slats, along with a durable rubber membrane which covers their aluminum connecting hinges, provide a 100% seal against dust pollution, drafts, and inclement weather. Optional insulation simply adds to the energy savings.



Shown with optional vision slat



SPIRAL®

HIGH PERFORMANCE RIGID ROLLING DOOR

Model Name

- Rytec® Spiral® Door

Size and Dimensions

- Maximum width up to 26'2"*
- Maximum height up to 21'*
- Multiple door configurations based on door size.

Safety

- Thru-beam photo eyes
- Control-reliable electronic reversing edge

Available Options

- Insulated slats
- Ventilated slats
- Vision slats
- Hood and motor covers

Warranty

- Five-year limited warranty on mechanical components.
- Two-year limited warranty on electrical components.



Shown with optional vision slats

Architectural Styling

- Double-walled aluminum slats are 6 inches high with an integral weatherseal between each panel.
- Slats are available in anodized aluminum or optional custom paint colors.

Spiral Technology

- Unique spiral design results in no metal to metal contact, resulting in less wear and tear on the panel.
- Ultra quiet and low maintenance operation.
- Utilizes a compact AC drive motor with variable speeds to allow for soft acceleration and deceleration.



Compact AC Drive Motor

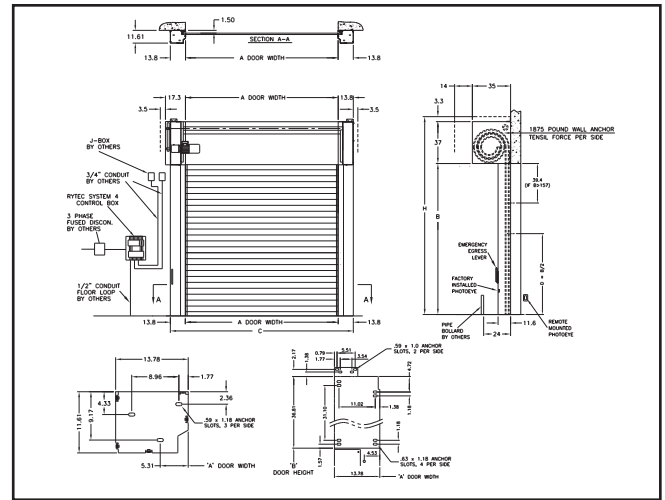
Electrical Controls

- System 4® controller housed in a NEMA 4X rated enclosure with factory set parameters.
- Intelligent processor monitors and controls power consumption.
- Advanced self-diagnostics for troubleshooting.



System 4 shown with optional rotary disconnect

* Larger sizes may be available upon request.



Note: Schematic for illustration only

Panel Design

- Integral rubber weatherseal between the anodized aluminum slats provides a tight weatherseal across the entire panel.
- Rubber weatherseal is replaceable for easy maintenance.
- Patented hinge design allows for removal and replacement of single slat without disassembling the door panel.



Integral rubber weatherseal

Counterbalance System

- Up to six extension springs in each side column, depending on the size of the door.
- The springs assist the motor in opening, reducing motor wear and increasing the longevity of mechanical components.
- Mechanical egress lever on the side column allows the door to be opened in the event of a power failure.

Safety

- Standard dual thru-beam photo eyes.
- Standard electric reversing edge.
- Standard Ry-Wi® Wireless System
- Standard Pathwatch® threshold warning lights.



888-GO-RYTEC RytecDoors.com
Tel 262-677-9046 Fax 262-677-2058
One Cedar Parkway Jackson, WI 53037-0403