

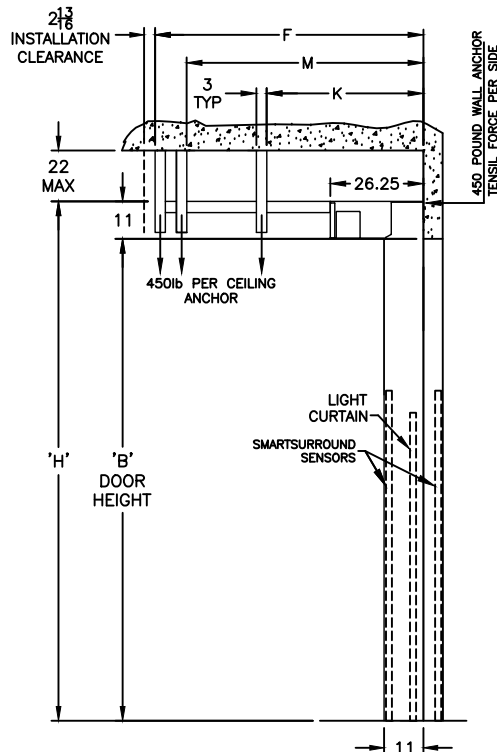
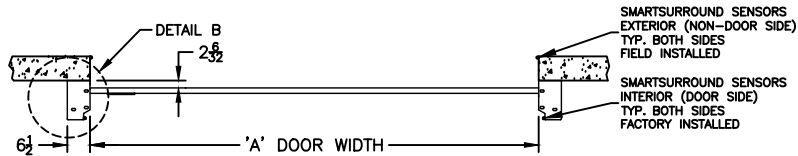
DIMENSIONAL VARIABLES

DRAWING NOT TO SCALE; DIMENSIONS IN INCHES

DOOR NO.	A	B	C	F	M	K	H

MILLIMETERS

ACTUAL DOOR SIZE IS PRODUCED IN MILLIMETERS
REQUESTED DOOR SIZE IS CONVERTED TO MILLIMETERS
AND ROUNDED UP TO THE NEAREST 10MM



- ELECTRICAL OPTIONS**
- 460v - 3ph
 - 230v/208v - 3ph
 - 230v - 1ph
 - 480v OPEN DELTA, UNGROUNDED (\$)
 - 575v - 3ph (\$)
(INCLUDES NEMA 4 METAL ENCLOSURE WITH 575/460 TRANSFORMER)

- STANDARD FEATURES**
- SIDE COLUMN AND HEAD CONSOLE POWDER COATED RYTEC SILVER.
 - INTELLIGENT LIGHT CURTAIN SYSTEM IN DOOR LINE TO 6'-0" ABOVE FINISHED FLOOR.
 - SMARTSURROUND ADVANCED DETECTION AND ALERT SYSTEM.
 - VARIABLE DOOR OPENING SPEED; UP TO 24"/SEC.
 - PROGRAMMABLE UPPER AND LOWER LIMITS.
 - NEMA 4X SYSTEM 4 CONTROL BOX (8.5"x16.5").
 - BRAKE RELEASE LEVER ON SIDE COLUMN.

- UPGRADE OPTIONS**
- RIGHT HAND DRIVE
 - ROTARY DISCONNECT (\$)
 - BTA4 (BLUETOOTH ACCESS TERMINAL) (\$)
NIGHT SWITCH FUNCTION: _____
 - SELECTOR SWITCH ON CONTROL BOX (\$)
FUNCTION: _____
 - PHOTOEYES IN LIEU OF LIGHT CURTAIN (\$)
 - FULL VISION PANEL
 - FULL VENTILATED PANEL
 - FULL HEIGHT ACTIVE REVERSING EDGE SENSOR (\$)

- ACTIVATION OPTIONS (\$)**
- PUSHBUTTON
 - PULL CORDS
 - MOTION DETECTOR
 - PRESENCE DET.
 - MOTION/PRESENCE
 - DUAL LOOP CONTROLLER
 - RADIO CONTROL RCVR
(INCLUDE MIN 2 XMIT)
 - ___ 1 BTN TRANSMITTER
 - ___ 2 BTN TRANSMITTER
 - ___ 4 BTN TRANSMITTER

OPTION NOTES

(\$) = PRICING CHANGE IF NOT INCLUDED IN QUOTE

PLEASE SPECIFY VOLTAGE

FORMULAS

F = (B + 30.50); FOR B < 91
F = (B + 11.00); FOR B >= 91

M = (B + 20.00); FOR B < 91
M = B; FOR B >= 91

K = NOT REQ'D; FOR B < 99
K = 72.00; FOR B >= 99

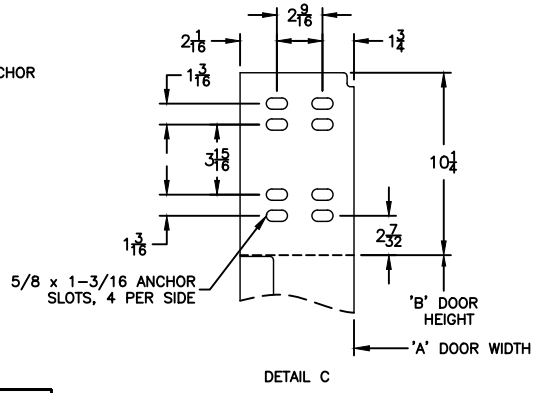
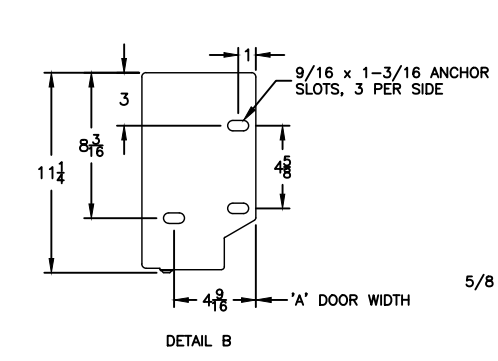
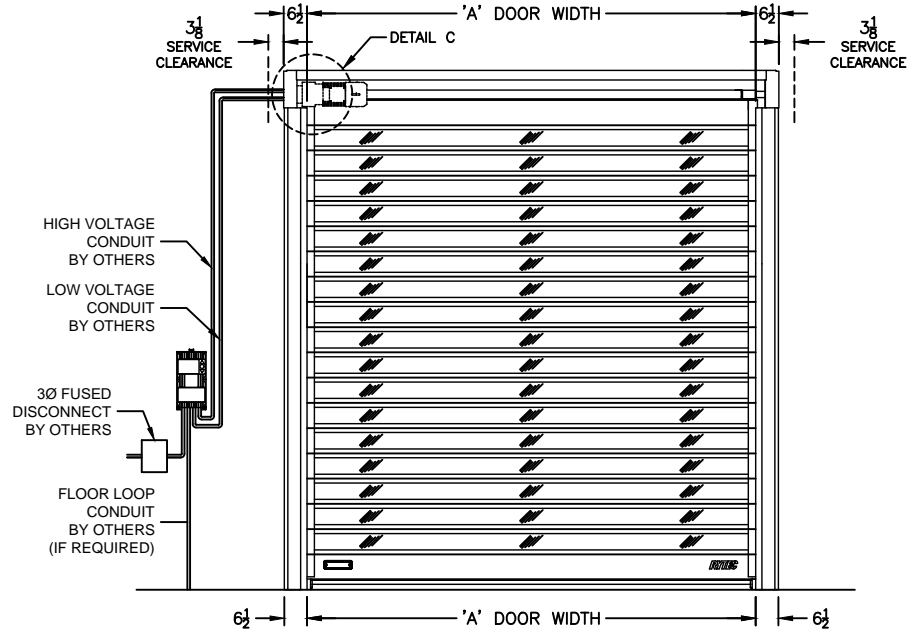
RYTEC CORPORATION
ONE CEDAR PARKWAY, JACKSON, WI 53037-0403

APPROVAL DRAWING
SPIRAL LP-FV MODEL STN-LP-L
FOR DOOR WIDTH UP TO 13'-1", HEIGHT UP TO 12'-0"

CUSTOMER: _____
LOCATION: _____
DATE: _____
DRAWING NO.: 731-01T REV.: _____

FINAL APPROVAL SIGNATURE
FABRICATION CAN PROCEED ACCORDING TO THE SPECIFICATION SHOWN EXCEPT AS NOTED

APPROVED BY: _____
PRINT NAME: _____
SIGNATURE: _____
DATE: _____



REV	DESCRIPTION	DATE	BY