

## POWERTEC™ MR

### Industrial Rubber Doors for Low Cycle Applications

Manually operated PowerTec™ MR industrial rubber doors are built with durable materials to withstand harsh environments in low cycle applications. In addition, the impactable design reduces maintenance and repair costs and decreases downtime. When high-speed and fast operation is not required but dependability is, doors with heavy-duty SBR rubber panels are a perfect fit. Ready when you are, these doors can stand up to changing weather conditions of exterior openings or to securely separate interior areas.

PowerTec MR industrial rubber doors are backed with a limited lifetime rubber panel warranty and a 2-year limited mechanical warranty.



#### Manually Operated

- No power, controller or motors needed; operated with a manual chain hoist (standard)

#### Breakaway System

- Allows panel and bottom bar to release from side column guides if impacted from either direction

#### Heavy-Duty Panel Construction

- Styrene butadiene rubber (SBR) panel
- Standard end locks for greater stability and performance

#### Low Profile

- Narrow side frame and head clearance requirements

#### Industrial Strength

- Stronger and more durable than conventional sectional doors
- Powder-coated components provide corrosion-resistance

# POWERTEC™ MR

## HIGH-PERFORMANCE RUBBER ROLL-UP DOOR

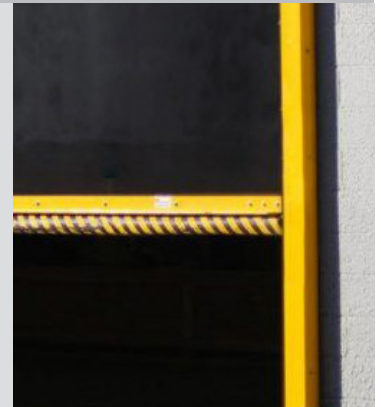


### Size/Dimensions

- Up to 18'W x 18'H
- 20-22" (22-24" with hood) headroom above lintel
- 18" max head projection
- 6" side column projection
- 11" side clearance, both sides
- Chain hoist/motor placement on right or left side

### Durable Panel Design

- 1/4-inch thick reinforced SBR rubber panel with 2000 psi tensile strength
- Puncture and rip-resistant panel
- Standard end locks for greater stability and performance



SBR black rubber panel

### Operation

- Manual drive system opening and closing is manually operated by use of a chain hoist



Chain hoist

### Breakaway Bottom Bar

- Breakaway tabs allow the bottom bar to release in either direction without damaging the door
- Easily reset with minimal effort

### Maximum Durability

- Powder-coated components, bottom and head plates provide corrosion-resistance for harsh environments
- 3.5-inch powder coated guides



Powder-coated in safety yellow

### Warranty

- Two-year limited warranty on mechanical components
- Limited lifetime warranty on SBR panel material



### Options

- EDPM door panel material in blue or grey
- Hood cover
- 2" high visibility strip
- 14" or 20" vision windows

Standard maximum sizes shown; other sizes may be available upon request.

American Owned, American Made



◀ Watch All Rytec Testimonials

Specifications subject to change  
© 2025 Rytec, a Nucor company LIT072925

**RytecDoors.com**  
**888-GO-RYTEC**

Rytec.Info@Nucor.com  
P: 262.677.9046  
W223N16601 Cedar Parkway  
Jackson, WI 53037-0403

**RYTEC**  
a NUCOR company