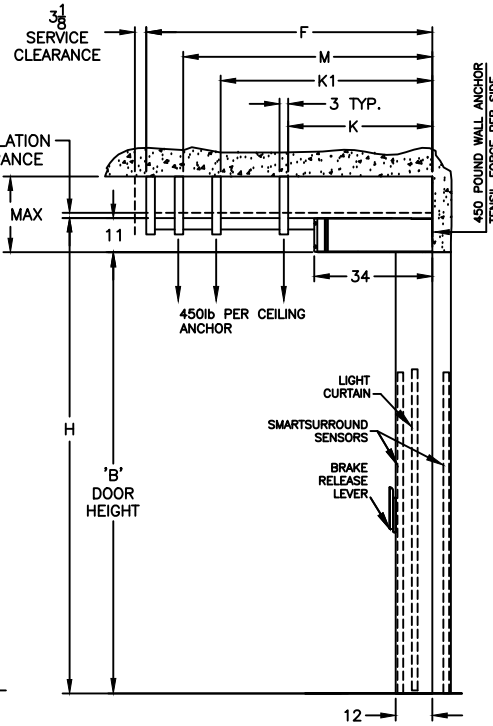
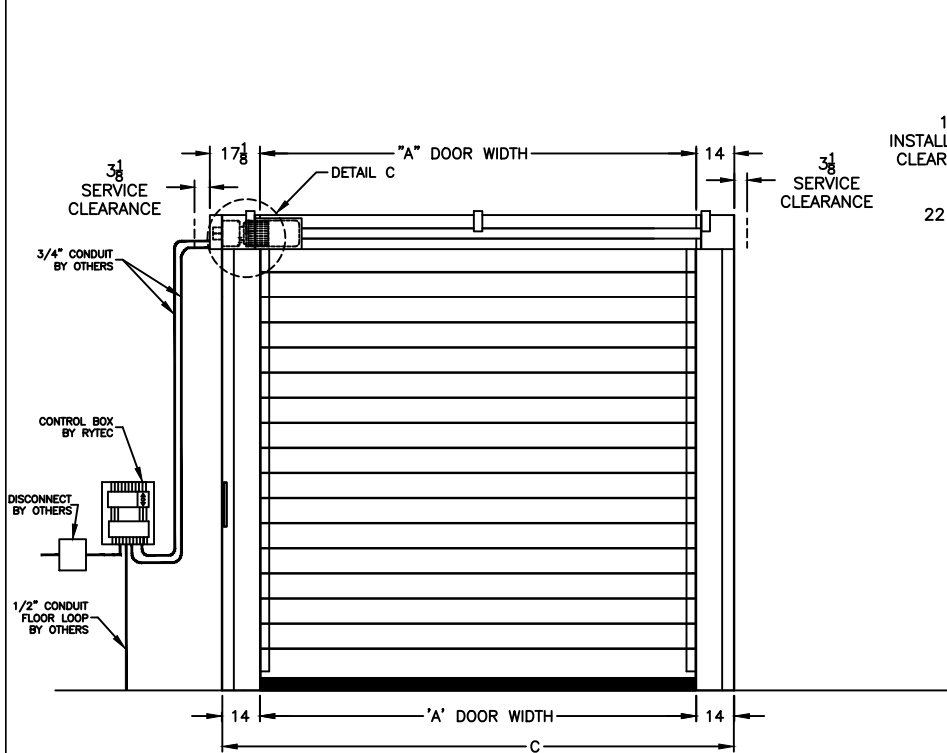
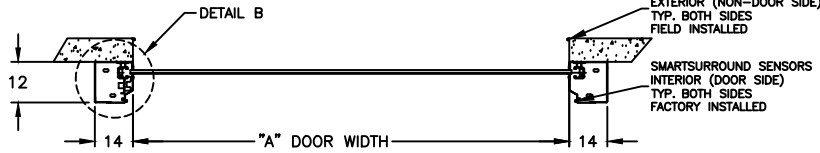


**DIMENSIONAL VARIABLES**

DRAWING NOT TO SCALE; DIMENSIONS IN INCHES

DOOR NO.	A	B	C	F	M	K1	K	H
MILLIMETERS								

ACTUAL DOOR SIZE IS PRODUCED IN MILLIMETERS  
REQUESTED DOOR SIZE IS CONVERTED TO MILLIMETERS  
AND ROUNDED UP TO THE NEAREST 10MM



**ELECTRICAL OPTIONS**

- 460v - 3ph
- 230v/208v - 3ph
- 230v - 1ph
- 480v OPEN DELTA, UNGROUNDED (\$)
- 575v - 3ph (\$)  
(INCLUDES NEMA 4 METAL ENCLOSURE WITH 575/460 TRANSFORMER)

**STANDARD FEATURES**

1. SIDE COLUMN AND HEAD CONSOLE POWDER COATED RYTEC SILVER.
2. INTELLIGENT LIGHT CURTAIN SYSTEM IN DOOR LINE TO 6'-0" ABOVE FINISHED FLOOR.
3. SMARTSURROUND ADVANCED DETECTION AND ALERT SYSTEM.
4. VARIABLE DOOR OPENING SPEED; UP TO 100"/SEC.
5. PROGRAMMABLE UPPER AND LOWER LIMITS.
6. NEMA 4X SYSTEM 4 CONTROL BOX (8.5"x16.5").
7. BRAKE RELEASE LEVER ON SIDE COLUMN.

**UPGRADE OPTIONS**

- BRAKE RELEASE LEVER
- SIDE COLUMN  REMOTE MOUNT (\$)  BOTH (\$)
- RIGHT HAND DRIVE
- ROTARY DISCONNECT (\$)
- BTA4 (BLUETOOTH ACCESS TERMINAL) (\$)
- SIDE COLUMN MOUNT:  LH  RH  NONE-REMOTE
- BTA4 NIGHT SWITCH (\$)
- FUNCTION: \_\_\_\_\_
- SELECTOR SWITCH ON CONTROL BOX (\$)
- FUNCTION: \_\_\_\_\_
- FULL HEIGHT ACTIVE REVERSING EDGE SENSOR (\$)

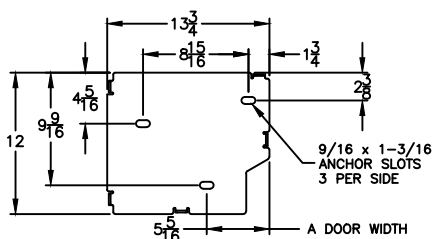
**ACTIVATION OPTIONS (\$)**

- PUSHBUTTON
- PULL CORDS
- MOTION DETECTOR
- PRESENCE DET.
- MOTION/PRESENCE
- DUAL LOOP CONTROLLER
- RADIO CONTROL RCVR (INCLUDE MIN 2 XMIT)
- 1 BTN TRANSMITTER
- 2 BTN TRANSMITTER
- 4 BTN TRANSMITTER

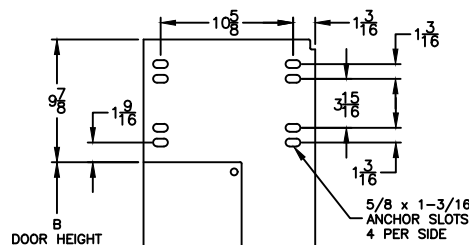
**OPTION NOTES**

(\$) = PRICING CHANGE IF NOT INCLUDED IN QUOTE  
- FULL VISION PANEL ASSEMBLY

\*\*\*PLEASE SPECIFY VOLTAGE\*\*\*



DETAIL B



DETAIL C

**HANGER FORMULAS**

K = NOT REQUIRED; FOR B<98  
K = 72; FOR B>=98  
  
K1 = NOT REQUIRED; FOR B<161  
K1 = 135; FOR B>=161  
  
M = B+20; FOR B<91  
M = B; FOR B>=91  
  
F = B+31; FOR B<91  
F = B+11; FOR B>=91

**FINAL APPROVAL SIGNATURE**

FABRICATION CAN PROCEED ACCORDING TO THE SPECIFICATION SHOWN EXCEPT AS NOTED

APPROVED BY: \_\_\_\_\_

PRINT NAME: \_\_\_\_\_

SIGNATURE: \_\_\_\_\_

DATE: \_\_\_\_\_

REV	DESCRIPTION	DATE	BY

**RYTEC CORPORATION**  
ONE CEDAR PARKWAY, JACKSON, WI 53037-0403

**APPROVAL DRAWING**  
**SPIRAL LH-FV MODEL STN-S**

FOR DOOR WIDTH UP TO 18'-0", HEIGHT UP TO 16'-4"

CUSTOMER:	
LOCATION:	
DATE:	
DRAWING NO.:	716-01T
REV.:	A