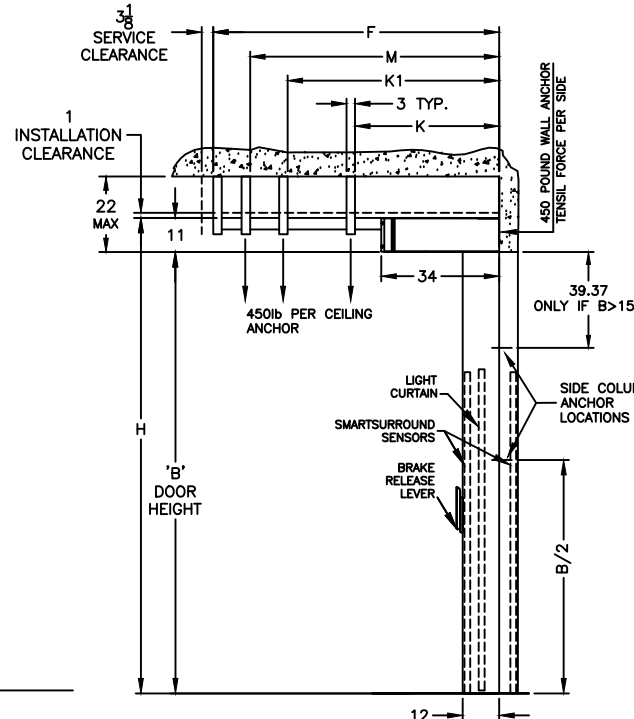
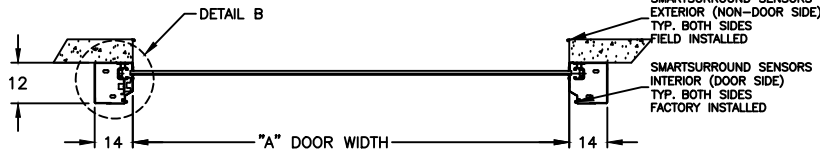


DIMENSIONAL VARIABLES

DRAWING NOT TO SCALE; DIMENSIONS IN INCHES

DOOR NO.	A	B	C	F	M	K1	K	H
MILLIMETERS								

ACTUAL DOOR SIZE IS PRODUCED IN MILLIMETERS
 REQUESTED DOOR SIZE IS CONVERTED TO MILLIMETERS
 AND ROUNDED UP TO THE NEAREST 10MM



ELECTRICAL OPTIONS

- 460v - 3ph
- 230v/208v - 3ph
- 230v - 1ph
- 480v OPEN DELTA, UNGROUNDED (\$)
- 575v - 3ph (\$)
- (INCLUDES NEMA 4 METAL ENCLOSURE WITH 575/460 TRANSFORMER)

STANDARD FEATURES

- SIDE COLUMN AND HEAD CONSOLE POWDER COATED RYTEC SILVER.
- INTELLIGENT LIGHT CURTAIN SYSTEM IN DOOR LINE TO 6'-0" ABOVE FINISHED FLOOR.
- SMARTSURROUND ADVANCED DETECTION AND ALERT SYSTEM.
- VARIABLE DOOR OPENING SPEED; UP TO 60"/SEC.
- PROGRAMMABLE UPPER AND LOWER LIMITS.
- NEMA 4X SYSTEM 4 CONTROL BOX (8.5"x16.5").
- BRAKE RELEASE LEVER ON SIDE COLUMN.

UPGRADE OPTIONS

- BRAKE RELEASE LEVER
- SIDE COLUMN REMOTE MOUNT (\$) BOTH (\$)
- RIGHT HAND DRIVE
- ROTARY DISCONNECT (\$)
- BTA4 (BLUETOOTH ACCESS TERMINAL) (\$)
- SIDE COLUMN MOUNT: LH RH NONE-REMOTE
- BTA4 NIGHT SWITCH (\$)
- FUNCTION: _____
- SELECTOR SWITCH ON CONTROL BOX(\$)
- FUNCTION: _____
- FULL HEIGHT ACTIVE REVERSING EDGE SENSOR (\$)

PANEL OPTIONS

- INSULATED SOLID SLATS (\$)
- WINDOWS (\$)
 - 1 2 3 4 OTHER _____
- VENTS (\$)
 - 1 2 3 4 OTHER _____
- VISION HEIGHT (DIM 'J')
 - 33" 39" 51"
- UP TO FOUR (4) VISION/VENT SLATS PER GROUP WITH AT LEAST ONE (1) SOLID SLAT SEPARATING GROUPS.

ACTIVATION OPTIONS (\$)

- PUSHBUTTON
- PULL CORDS
- MOTION DETECTOR
- PRESENCE DET.
- MOTION/PRESENCE
- DUAL LOOP CONTROLLER
- RADIO CONTROL RCVR (INCLUDE MIN 2 XMIT)
- 1 BTN TRANSMITTER
- 2 BTN TRANSMITTER
- 4 BTN TRANSMITTER

OPTION NOTES

(\$) = PRICING CHANGE IF NOT INCLUDED IN QUOTE

PLEASE SPECIFY VOLTAGE

RYTEC CORPORATION
 ONE CEDAR PARKWAY, JACKSON, WI 53037-0403

APPROVAL DRAWING
 SPIRAL LH MODEL SSN-S
 FOR DOOR WIDTH UP TO 20', HEIGHT UP TO 16'-4"

CUSTOMER: _____
 LOCATION: _____
 DATE: _____
 DRAWING NO.: 727-01T REV.: A

HANGER FORMULAS

K = NOT REQUIRED; FOR B<98
 K = 72; FOR B>=98

K1 = NOT REQUIRED; FOR B<161
 K1 = 135; FOR B>=161

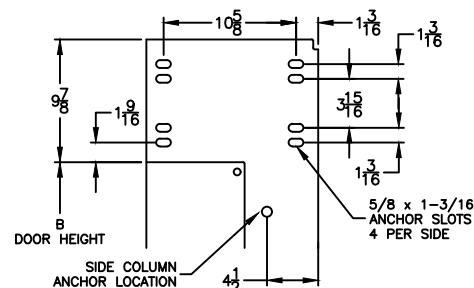
M = B+20; FOR B<91
 M = B; FOR B>=91

F = B+31; FOR B<91
 F = B+11; FOR B>=91

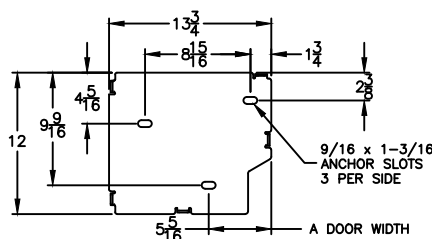
FINAL APPROVAL SIGNATURE

FABRICATION CAN PROCEED ACCORDING TO THE SPECIFICATION SHOWN EXCEPT AS NOTED

APPROVED BY: _____
 PRINT NAME: _____
 SIGNATURE: _____
 DATE: _____



DETAIL C



DETAIL B

REV	DESCRIPTION	DATE	BY