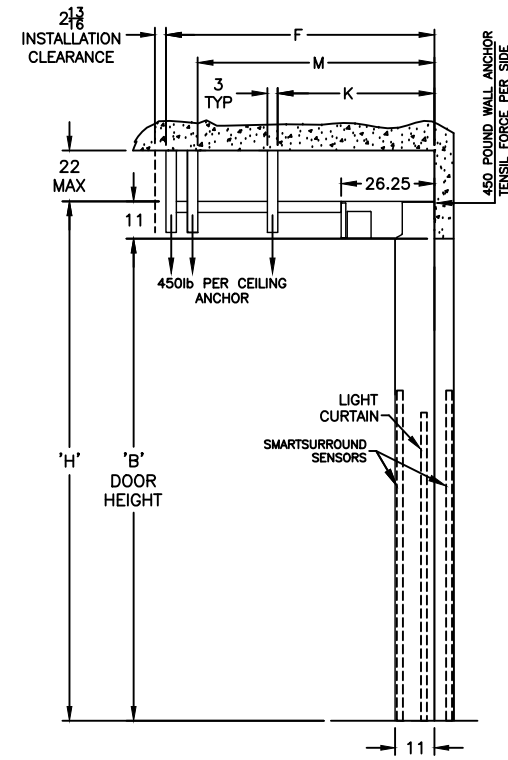
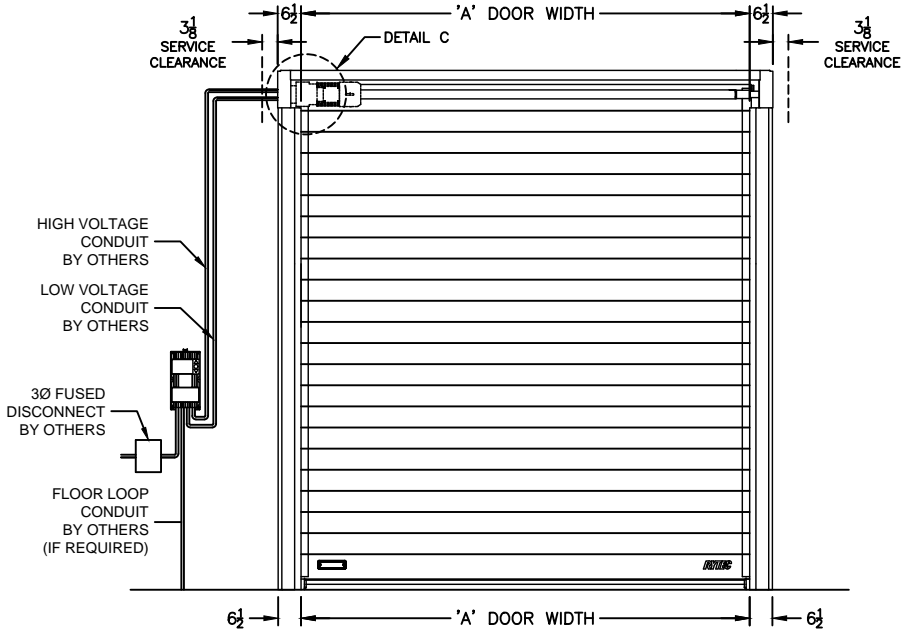
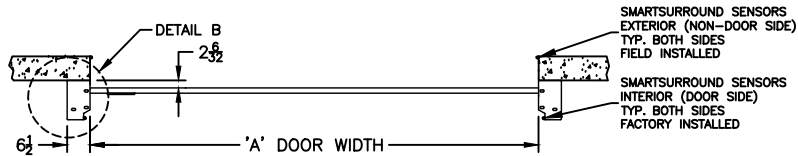


DIMENSIONAL VARIABLES

DRAWING NOT TO SCALE; DIMENSIONS IN INCHES

DOOR NO.	A	B	C	F	M	K	H

MILLIMETERS
 ACTUAL DOOR SIZE IS PRODUCED IN MILLIMETERS
 REQUESTED DOOR SIZE IS CONVERTED TO MILLIMETERS
 AND ROUNDED UP TO THE NEAREST 10MM



- ELECTRICAL OPTIONS**
- 460v - 3ph
 - 230v/208v - 3ph
 - 230v - 1ph
 - 480v OPEN DELTA, UNGROUNDED (\$)
 - 575v - 3ph (\$)
(INCLUDES NEMA 4 METAL ENCLOSURE WITH 575/460 TRANSFORMER)

- STANDARD FEATURES**
- SIDE COLUMN AND HEAD CONSOLE POWDER COATED RYTEC SILVER.
 - INTELLIGENT LIGHT CURTAIN SYSTEM IN DOOR LINE TO 6'-0" ABOVE FINISHED FLOOR.
 - SMARTSURROUND ADVANCED DETECTION AND ALERT SYSTEM.
 - VARIABLE DOOR OPENING SPEED; UP TO 24"/SEC.
 - PROGRAMMABLE UPPER AND LOWER LIMITS.
 - NEMA 4X SYSTEM 4 CONTROL BOX (8.5"x16.5").
 - BRAKE RELEASE LEVER ON SIDE COLUMN.

- UPGRADE OPTIONS**
- RIGHT HAND DRIVE
 - ROTARY DISCONNECT (\$)
 - BTA4 (BLUETOOTH ACCESS TERMINAL) (\$)
NIGHT SWITCH FUNCTION: _____
 - SELECTOR SWITCH ON CONTROL BOX (\$)
FUNCTION: _____
 - FULL HEIGHT ACTIVE REVERSING EDGE SENSOR (\$)

- PANEL OPTIONS**
- INSULATED SOLID SLATS (\$)
WINDOWS (\$)
 1 2 3 4 OTHER _____
 - VENTS (\$)
 1 2 3 4 OTHER _____
 - VISION HEIGHT (DIM 'J')
 33" 39" 51"

UP TO FOUR (4) VISION/VENT SLATS PER GROUP WITH AT LEAST ONE (1) SOLID SLAT SEPARATING GROUPS.
 OR UP TO SEVEN (7) VISION/VENT SLATS PER GROUP W/ AT LEAST TWO (2) SOLID SLATS SEPARATING GROUPS.

- ACTIVATION OPTIONS (\$)**
- PUSHBUTTON
 - PULL CORDS
 - MOTION DETECTOR
 - PRESENCE DET.
 - MOTION/PRESENCE
 - DUAL LOOP CONTROLLER
 - RADIO CONTROL RCVR (INCLUDE MIN 2 XMIT)
 - 1 BTN TRANSMITTER
 - 2 BTN TRANSMITTER
 - 4 BTN TRANSMITTER

OPTION NOTES
 (\$) = PRICING CHANGE IF NOT INCLUDED IN QUOTE

PLEASE SPECIFY VOLTAGE

RYTEC CORPORATION
 ONE CEDAR PARKWAY, JACKSON, WI 53037-0403

APPROVAL DRAWING
 SPIRAL LP MODEL SSN-LP-S
 DOOR WIDTHS 13'-2" TO 20'-0", HEIGHT UP TO 12'-0"

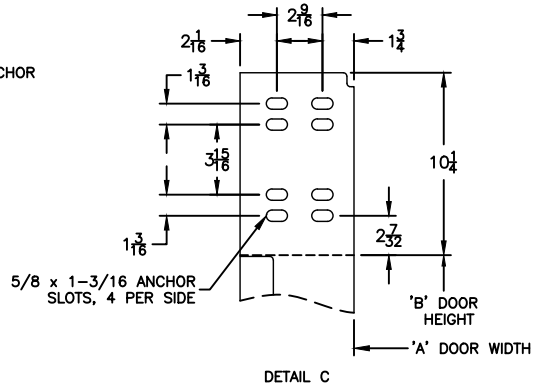
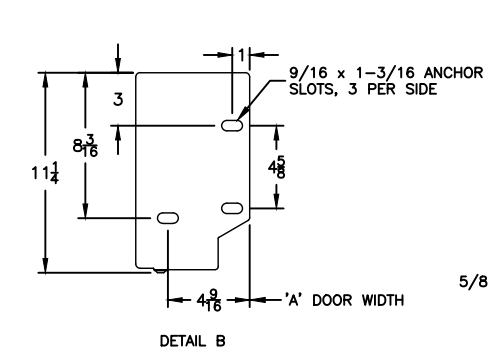
CUSTOMER: _____
 LOCATION: _____
 DATE: _____
 DRAWING NO.: 732-01T REV.: _____

FORMULAS

F = (B + 30.50); FOR B < 91
 F = (B + 11.00); FOR B >= 91

M = (B + 20.00); FOR B < 91
 M = B; FOR B >= 91

K = NOT REQ'D; FOR B < 99
 K = 72.00; FOR B >= 99



FINAL APPROVAL SIGNATURE
 FABRICATION CAN PROCEED ACCORDING TO THE SPECIFICATION SHOWN EXCEPT AS NOTED

APPROVED BY: _____
 PRINT NAME: _____
 SIGNATURE: _____
 DATE: _____

REV	DESCRIPTION	DATE	BY