

DIMENSIONAL VARIABLES

DRAWING NOT TO SCALE. DIMENSIONS IN INCHES

DOOR NO.	A	B	C	H

MILLIMETERS

ACTUAL DOOR SIZE IS PRODUCED IN MILLIMETERS
REQUESTED DOOR SIZE IS CONVERTED TO MILLIMETERS
AND ROUNDED UP TO THE NEAREST 10MM

ELECTRICAL OPTIONS

- | | |
|---|--|
| <input type="checkbox"/> 460v - 3ph | <input type="checkbox"/> 575v - 3ph (\$) |
| <input type="checkbox"/> 230v/208v - 3ph | (INCLUDES NEMA 4 METAL ENCLOSURE WITH 575/460 TRANSFORMER) |
| <input type="checkbox"/> 230v - 1ph | |
| <input type="checkbox"/> 480v OPEN DELTA, UNGROUNDED (\$) | |

STANDARD FEATURES

- SIDE COLUMN AND HEAD CONSOLE POWDER COATED RYTEC SILVER.
- INTELLIGENT LIGHT CURTAIN SYSTEM IN DOOR LINE TO 6'-0" ABOVE FINISHED FLOOR.
- SMARTSURROUND ADVANCED DETECTION AND ALERT SYSTEM.
- VARIABLE DOOR OPENING SPEED; UP TO 118"/SEC.
- PROGRAMMABLE UPPER AND LOWER LIMITS.
- NEMA 4X SYSTEM 4 CONTROL BOX (8.5"x16.5").
- BRAKE RELEASE LEVER ON SIDE COLUMN.

STANDARD OPTIONS

- BRAKE RELEASE LEVER**
- SIDE COLUMN REMOTE MOUNT BOTH
- SLANT HOOD (INCLUDES FRONT/BOTTOM COVERS)
- FLAT HOOD (INCLUDES FRONT/BOTTOM COVERS)
- FRONT AND BOTTOM HEAD COVERS ONLY
- RIGHT HAND DRIVE
- ROTARY DISCONNECT
- BT44 (BLUETOOTH ACCESS TERMINAL) (\$)
- SIDE COLUMN MOUNT: LH RH NONE-REMOTE
- FUNCTION: _____
- SELECTOR SWITCH ON CONTROL BOX
- FUNCTION: _____
- FULL HEIGHT ACTIVE REVERSING EDGE SENSOR (\$)

ACTIVATION

- | | |
|--|---|
| <input type="checkbox"/> — PUSHBUTTON | <input type="checkbox"/> DUAL LOOP CONTROLLER |
| <input type="checkbox"/> — PULL CORDS | <input type="checkbox"/> RADIO CONTROL RCVR |
| <input type="checkbox"/> — MOTION DETECTOR | (INCLUDE MIN 2 XMIT) |
| <input type="checkbox"/> — PRESENCE DET. | — 1 BTN TRANSMITTER |
| <input type="checkbox"/> — MOTION/PRESENCE | — 2 BTN TRANSMITTER |
| | — 4 BTN TRANSMITTER |

OPTION NOTES

ADDITIONAL NOTES:
- FULL VENTILATED SLAT ASSEMBLY

PLEASE SPECIFY VOLTAGE

RYTEC CORPORATION

ONE CEDAR PARKWAY, JACKSON, WI 53037-0403

APPROVAL DRAWING

SPIRAL FULL VENTILATED MODEL STT-L

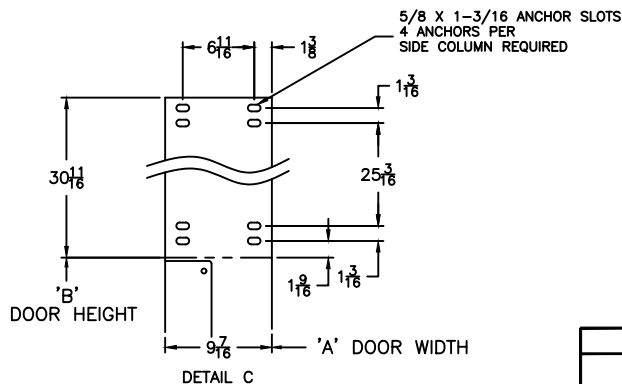
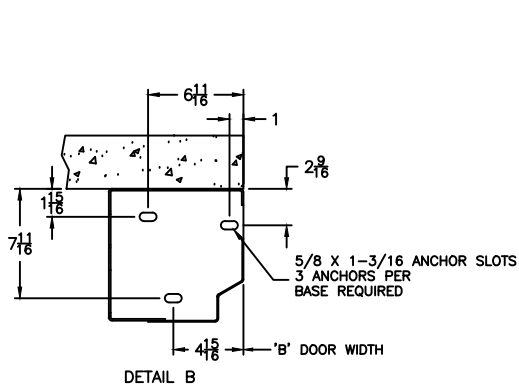
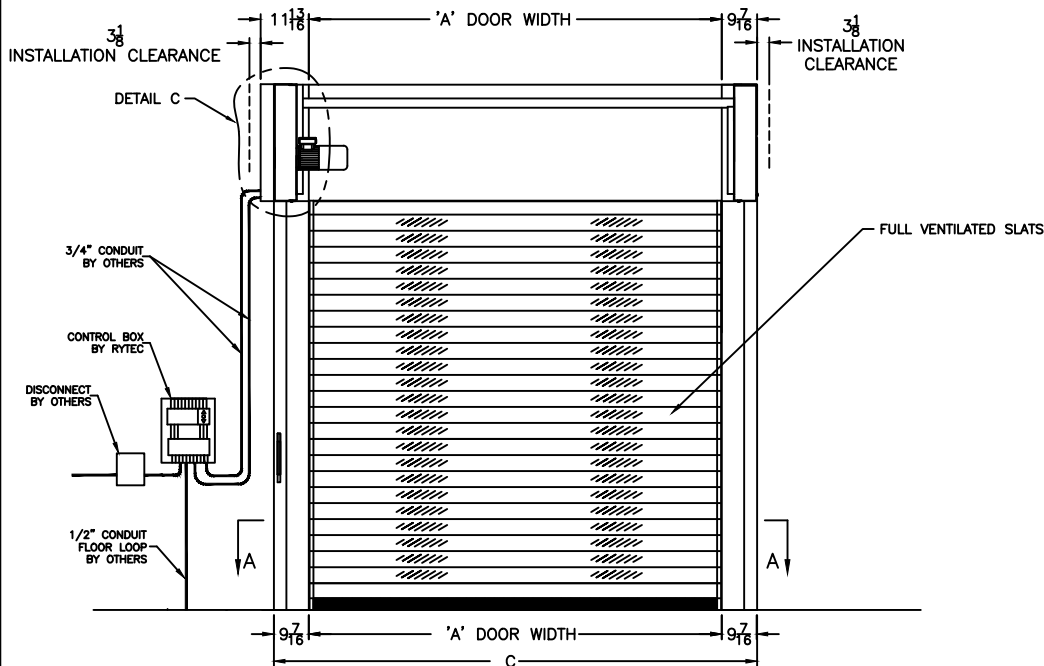
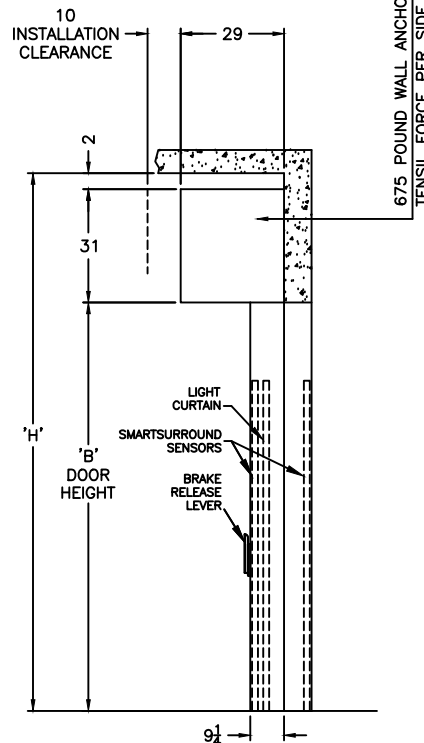
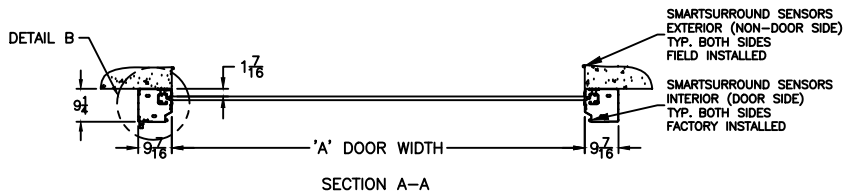
FOR DOOR WIDTH UP TO 13'-1", HEIGHT UP TO 12'-9"

CUSTOMER: _____

LOCATION: _____

DATE: _____ REV.: _____

DRAWING NO.: 724-02T



REV	DESCRIPTION	DATE	BY

APPROVAL SIGNATURE
FABRICATION CAN PROCEED ACCORDING TO THE SPECIFICATION SHOWN EXCEPT AS NOTED

APPROVED BY: _____

PRINT NAME: _____

SIGNATURE: _____

DATE: _____