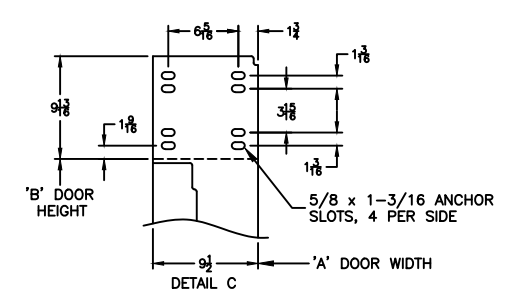
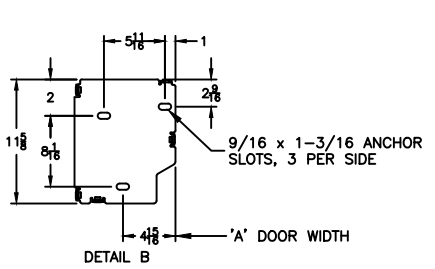
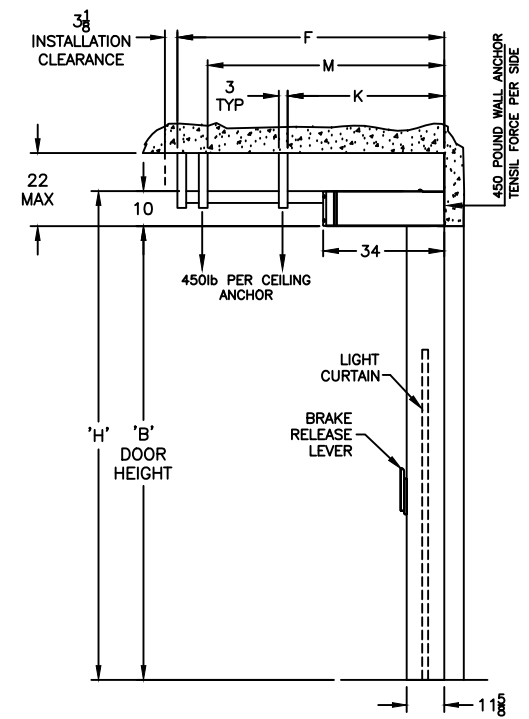
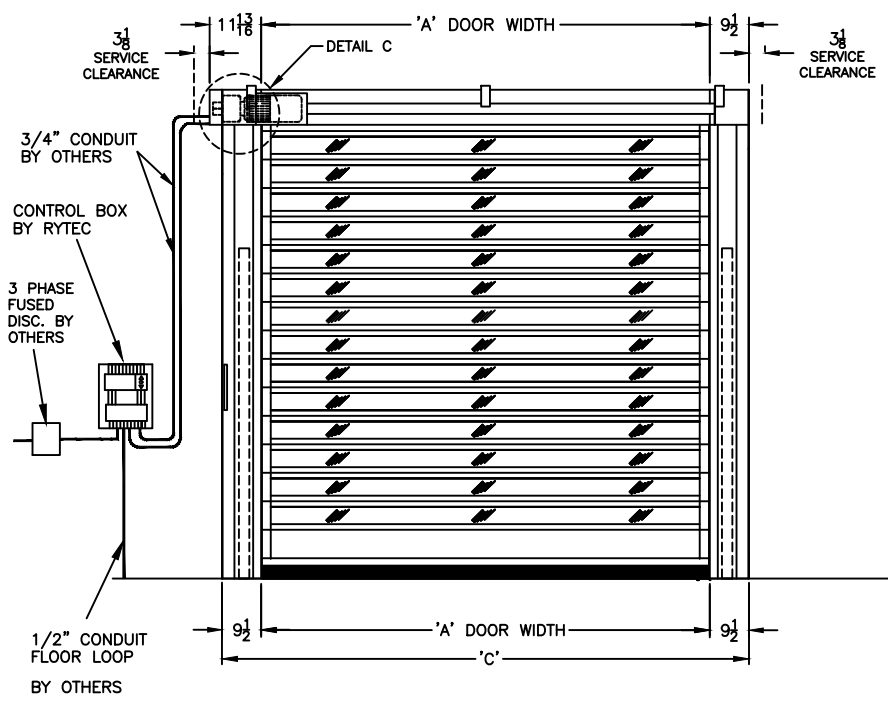
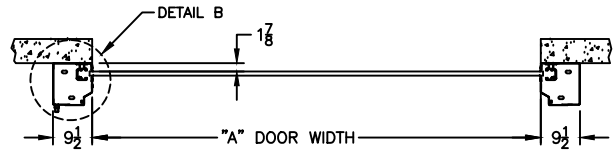


DIMENSIONAL VARIABLES

DRAWING NOT TO SCALE; DIMENSIONS IN INCHES

DOOR NO.	A	B	C	F	M	K	H

MILLIMETERS
 ACTUAL DOOR SIZE IS PRODUCED IN MILLIMETERS
 REQUESTED DOOR SIZE IS CONVERTED TO MILLIMETERS
 AND ROUNDED UP TO THE NEAREST 10MM



ELECTRICAL OPTIONS

- 460v - 3ph
- 230v/208v - 3ph
- 230v/208v - 1ph
- 575v - 3ph (\$)
(INCLUDES NEMA 4 METAL ENCLOSURE WITH 575/460 TRANSFORMER)

STANDARD FEATURES

1. SIDE COLUMN AND HEAD CONSOLE POWDER COATED RYTEC SILVER.
2. INTELLIGENT LIGHT CURTAIN SYSTEM IN DOOR LINE TO 6'-0" ABOVE FINISHED FLOOR.
3. VARIABLE DOOR OPENING SPEED; UP TO 60"/SEC.
4. PROGRAMMABLE UPPER AND LOWER LIMITS.
5. NEMA 4X SYSTEM 4 CONTROL BOX (8.5"x16.5").
6. BRAKE RELEASE LEVER ON SIDE COLUMN.
7. ELECTRICAL FAIL SAFE REVERSING EDGE.
8. ONE (1) SET PATHWATCH LEDS.

UPGRADE OPTIONS

- BRAKE RELEASE LEVER
- SIDE COLUMN
 - REMOTE MOUNT (\$)
 - BOTH (\$)
 - RIGHT HAND DRIVE
 - ROTARY DISCONNECT (\$)
 - SELECTOR SWITCH ON CONTROL BOX (\$)
- FUNCTION:
- PHOTOEYES IN LIEU OF LIGHT CURTAIN (\$)

ACTIVATION OPTIONS (\$)

- PUSHBUTTON
- PULL CORDS
- MOTION DETECTOR
- PRESENCE DET.
- MOTION/PRESENCE
- DUAL LOOP CONTROLLER
- RADIO CONTROL RCVR (INCLUDE MIN 2 XMIT)
- 1 BTN TRANSMITTER
- 2 BTN TRANSMITTER
- 4 BTN TRANSMITTER

OPTION NOTES

(\$) = PRICING CHANGE IF NOT INCLUDED IN QUOTE

- FULL VISION PANEL ASSEMBLY

PLEASE SPECIFY VOLTAGE

FORMULAS

F = (B + 30.50); FOR B < 91
 F = (B + 11.00); FOR B >= 91

M = (B + 20.00); FOR B < 91
 M = B; FOR B >= 91

K = NOT REQ'D; FOR B < 99
 K = 72.00; FOR B >= 99

FINAL APPROVAL SIGNATURE

FABRICATION CAN PROCEED ACCORDING TO THE SPECIFICATION SHOWN EXCEPT AS NOTED

APPROVED BY: _____

PRINT NAME: _____

SIGNATURE: _____

DATE: _____

RYTEC CORPORATION

ONE CEDAR PARKWAY, JACKSON, WI 53037-0403

APPROVAL DRAWING

SPIRAL LH-FV MODEL STN-L

FOR DOOR WIDTH UP TO 13'-1", HEIGHT UP TO 13'-1"

CUSTOMER: _____

LOCATION: _____

DATE: _____

DRAWING NO.: 715-01T

REV.: _____

REV	DESCRIPTION	DATE	BY